



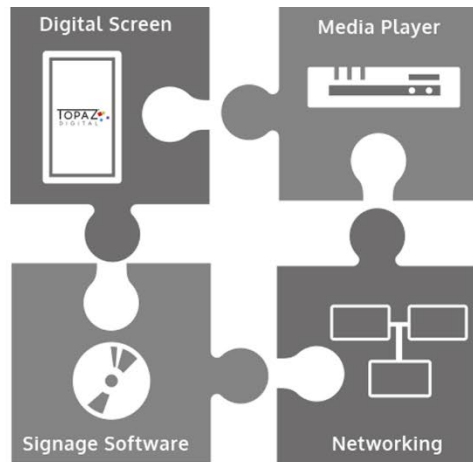
**FREESTANDING
ANDROID SL DISPLAYS**

TURN HEADS WITH THE TOPAZ FREESTANDING DISPLAY NOW INCORPORATING ANDROID POWER AND FUNCTIONALITY

Our Freestanding SL Series Displays are proven to be real attention grabbers and stand out in a busy commercial environment providing businesses a fresh approach to digital signage... an 'Out of the Box, Fully Inclusive' approach which enables businesses to control and manage costs and deployment in a more effective way.

With our latest Android powered Freestanding screens, the functionality has increased delivering even more benefits for your business.

TYPICAL DIGITAL SIGNAGE SOLUTION



THE TOPAZ ASL ALL INCLUSIVE SOLUTION



FREESTANDING ANDROID SL DISPLAYS



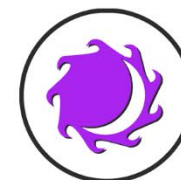
**INCLUSIVE
TOPAZ CMS
SOFTWARE**



**IN-BUILT
ANDROID MEDIA
PLAYER**



**LOCK PROTECTED
COMPARTMENT**



24/7 USAGE



**WIFI
CONNECTIVITY**



**MULTIPLE
INPUTS**



**INTEGRATED
SPEAKERS**



LED BACKLIGHT



PRODUCT HIGHLIGHTS

TABLET LIKE AESTHETIC

With a tempered glass face, rounded corners, super slim depth, aluminium edging and a narrow bezel the Freestanding ASL displays have an eye-catching tablet-like aesthetic.

EASY TO MOVE

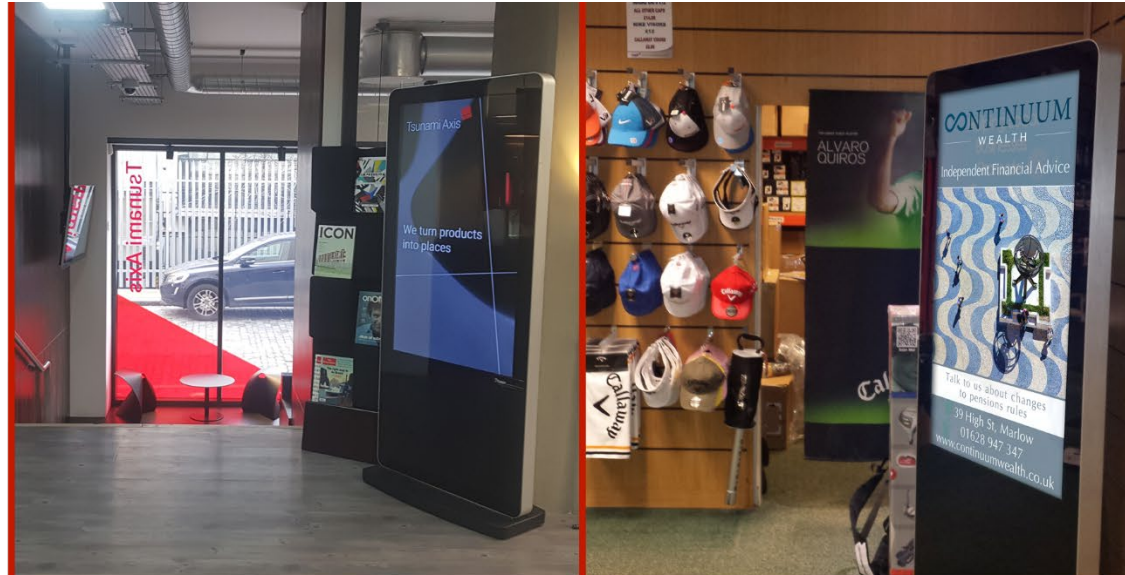
The integrated castors, recessed rear handles, and lightweight design make these displays extremely easy to move around displays making them the perfect portable solution. Once in place, the retractable feet can be used to keep the display in place for a more permanent solution.

LOCKABLE COMPARTMENT

The Freestanding ASL displays have a lockable compartment at the back with space to fit a small PC or media player in case you wish to use the HDMI or VGA inputs for your own solution. Your device can be powered from inside the locker with no need for additional power cables.

BLACK VERSION AVAILABLE

Although the standard white model offers a clean, modern aesthetic, if you want a more classic look there is also a piano black version available upon request.



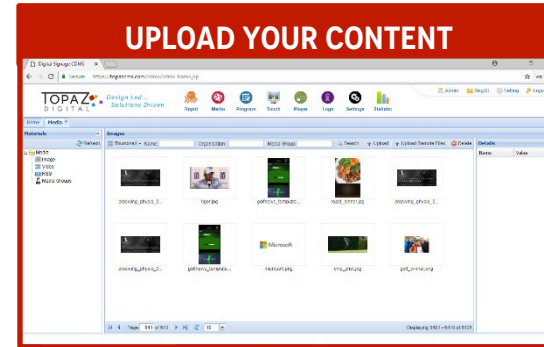
TOPAZ CONTENT MANAGEMENT SYSTEM (CMS)

Manage your content and update your TOPAZ displays through our **cloud based** content management system from **anywhere in the world**.

Content can be uploaded and managed from anywhere in the world via our secure web portal. Simply log in, upload your images and videos to our secure server and send them directly to your screens.

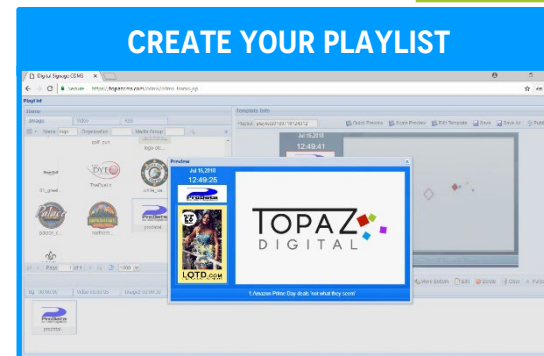
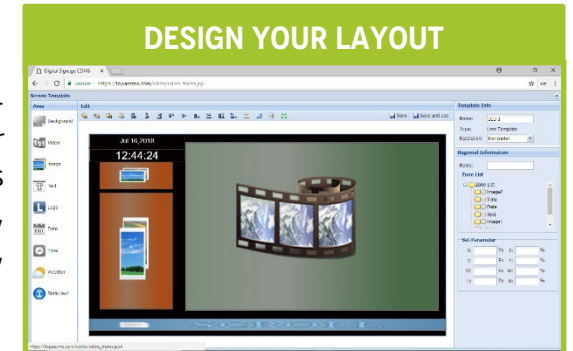


EASY TO USE INTERFACE



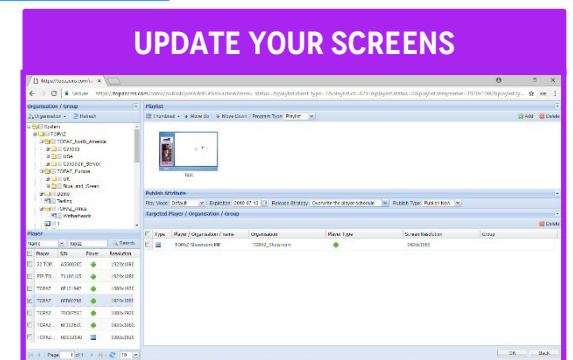
All uploaded content is stored on our secure server so is always accessible.

Choose from one of the pre-designed templates or create your own layouts using zones such as video, images, text, web pages, weather and more!



Simply drag and drop your content into your created zones to create your playlist!

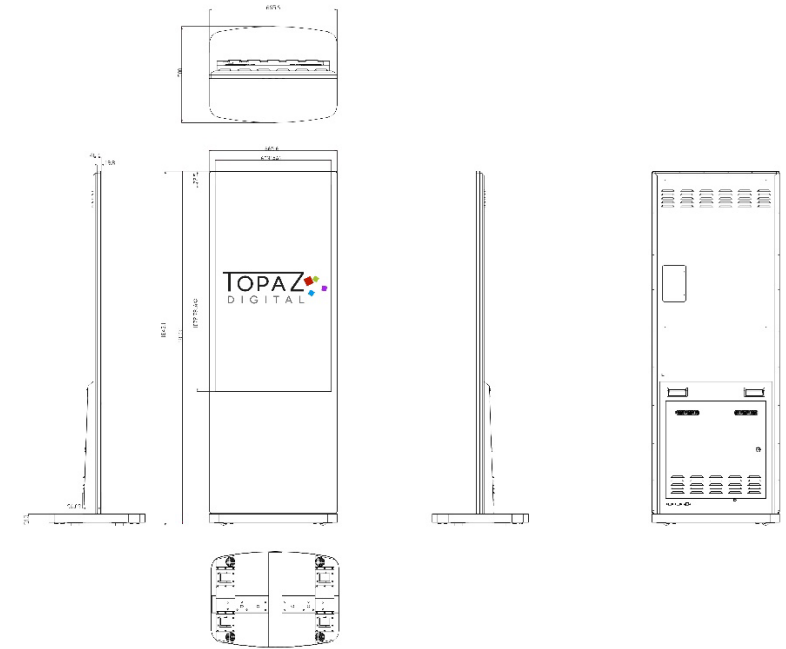
You can then publish your content to single or multiple screens, or even to your entire organisation!



TOPAZ FREESTANDING ASL DISPLAYS - TECHNICAL SPECIFICATIONS

DISPLAY	DISPLAY SIZE	50 INCH		55 INCH
	UNIT SIZE (WXHxD MM)	665.6 x 1843.1 x 41.2		744 x 1911.5 x 41.2
	UNIT WEIGHT (KG)	47.95		69.5
	DISPLAY AREA (MM)	603 x 1072		681.4 x 1210.6
	SPEAKER TYPE	10W, 4Ω (x2)		
	RESOLUTION	1080 x 1920		
	ASPECT RATIO	9:16		
	BRIGHTNESS (CD/M2)	450		
	CONTRAST RATIO	5000:1		
	COLOUR	16.7M		
	VIEWING ANGLE	178°		
	INPUT VOLTAGE	AC110-240V (50Hz-60Hz)		
	WORKING TEMPERATURE	0°C to 50°C		
AV INPUTS	VIDEO	HDMI, VGA		
	AUDIO	Audio Socket (3.5mm)		
INTERNAL MEDIA PLAYER	MEDIA RESOLUTION	1080 x 1920		
	INTERNAL MEMORY	8GB eMMC	8GB eMMC	
	CPU	Quad-Core ARM Cortex A17, 1.6GHz		
	GPU	Quad-Core ARM Mali-T764	Quad-Core ARM Mali-T764	
	RAM	2GB DDR3		
	USB	1 x USB (OTG/HOST), 1 x USB (HOST)		
	LAN	100M/1000M Ethernet	100M/1000M Ethernet	
	WI-FI	802.11b/g/n		
	OS	Android 7.1		
	GRAPHIC ENGINE	OpenGL ES 1.1/2.0/3.0/3.1, OpenCL 1.1, Renderscript, Direct3D 11.1		
ACCESSORIES INCLUDED	Power Cable, Remote Control, Key, User Manual			

TPZ-ASL-50FS



TPZ-ASL-55FS

