

TOPAZ STRETCH SCREEN

THE ULTIMATE DIGITAL POS HEADER
FOR THE RETAIL INDUSTRY

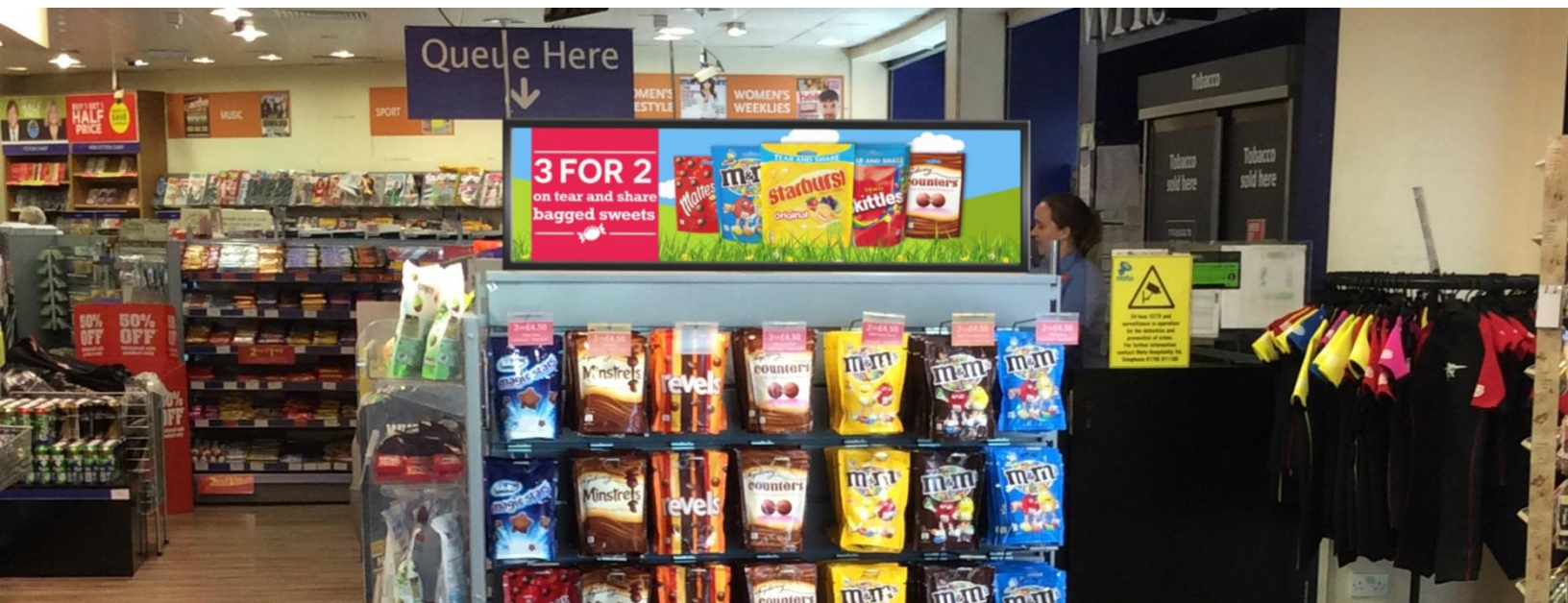


High profile branded products should have a POS system that makes them stand out from the crowd in the busy world of retail and give them a USP. So, designed specifically for the retail trade, the TOPAZ Stretch Screen replicates a traditional retail header board but allows digital content to make your product really stand out in this very busy environment.

You can now include dynamic content to capture maximum attention. Incorporate video, product adverts, moving images, flashing price points or any imaginative content to make your consumer take notice of your brand and your promotion.

The solution comes with a powerful media player to store the content which is Wi-Fi enabled so it allows you to manage all the content across the estate from one central location, making sure you are showing the right content at the right time in the right location.

A range of size options are available & all can be neatly incorporated into existing infrastructure

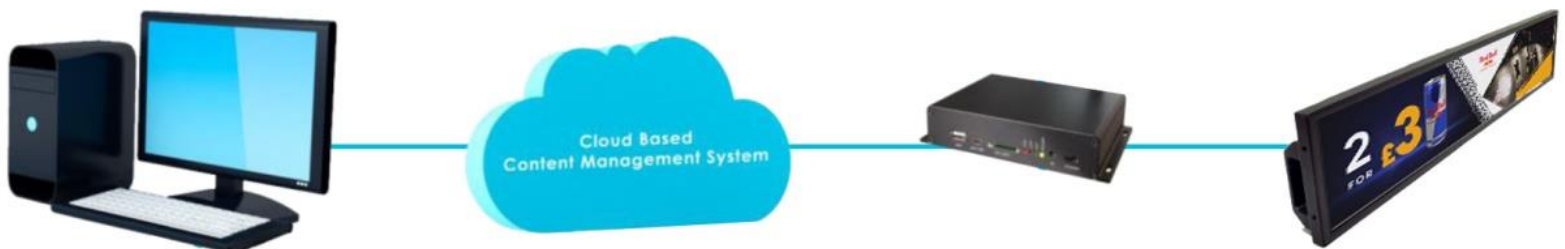


TOPAZ STRETCH DISPLAYS
TPZ-POS-38S



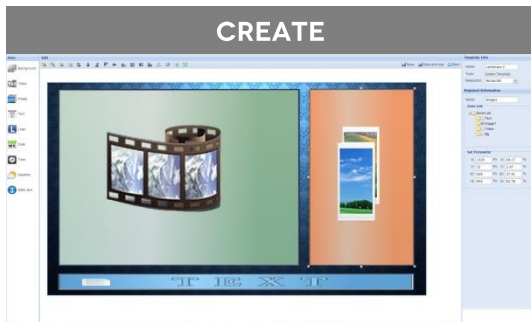
TOPAZ SL DISPLAYS
SPECIFICATIONS

PANEL	DISPLAY SIZE	38 INCH
	RESOLUTION	1920 x 540
	DISPLAY AREA (MM)	919.3 x 258.5
	ASPECT RATIO	16:4.5
	BRIGHTNESS (CD/M2)	1000
	COLOUR	16.7M
	VIEWING ANGLE	178°
	CONTRAST RATIO	8500:1
POWER	CONSUMPTION	43W
MECHANICAL	UNIT SIZE (WXHxD MM)	967.6 x 2973 x 59.5
	WORKING TEMPERATURE	0°C to 50°C
	NET WEIGHT	8.7 kg
MEDIA PLAYER	UNIT SIZE	156x104x34 mm
	INTERNAL MEMORY	6GB
	POWER SUPPLY	5V DC input
	POWER CONSUMPTION	Approx 5W
	AV SIGNAL OUTPUTS	HDMI, VGA, Audio (3.5mm)
	MEDIA FORMATS	Video (MPG, AVI, MP4),
	AUDIO OUTPUT	Stereo Analog Audio (3.5mm Jack)
	CPU	Quad-Core Cortex-A9 @1.6GHz
	GPU	Mali-400 MP4 @600MHz
	OS	Android 4.2.2
	GRAPHIC ENGINE	OpenGL ES 1.1/2.0, OpenVG 1.1
	NETWORK CONNECTIVITY	LAN - IEEE802.3 10/100M, Wi-Fi - IEEE802.11b/g/n
ACCESSORIES	Power Lead, HDMI Cable, User Manual	



TOPAZ CONTENT MANAGEMENT SYSTEM (CMS)

- Manage your content through our **cloud based** content management system from **anywhere in the world**.
- User control enables you to **manage your users** and control who in your organisation has access to update specific areas
- Clients are issued with a username and password for our **secure web portal**, where they can **upload their content** at the click of a button which is stored on our **secure server**.
- Utilize **zoned templates** to present your videos, images, scrolling text messages, web pages and **live** RSS feeds.
- Create multiple playlists to determine exactly when the **relevant content** is displayed.
- Update your screens **individually** or in **groups, manually** or **automatically** depending on your requirements.



Create custom layouts - Choose from one of the pre-designed templates or create your own layouts using zones such as video, images, text, web pages, weather and more!

This allows you to deliver targeted content and display your messages exactly how you want to!



Populate your layout – Upload your images and videos and simply drag and drop into your created zones to create your playlist!

Text zones can also be populated through linking to external RSS feeds or custom messaging – ensuring your messages are targeted as well as informative!



Update your screens from anywhere - Content can be uploaded and managed from anywhere in the world via our secure web portal. Simply log in, upload your images and videos to our secure server and send them directly to your screens.