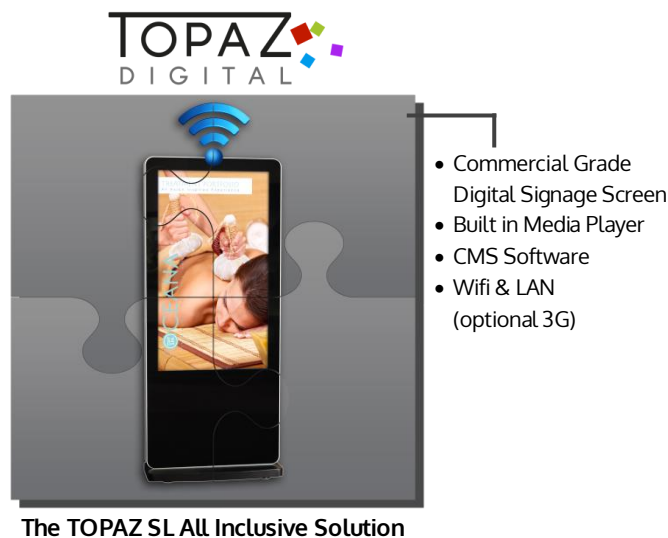
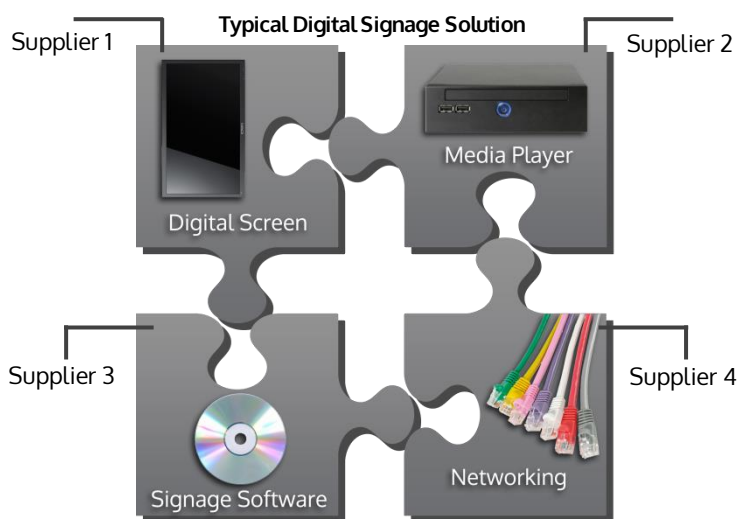


TURN HEADS WITH THE TOPAZ FREESTANDING SL DISPLAY

CLOUD BASED DIGITAL SIGNAGE STRAIGHT OUT OF THE BOX

Our Freestanding SL Series Displays are proven to be real attention grabbers and stand out in a busy commercial environment providing businesses a fresh approach to digital signage... an **'Out of the Box, Fully Inclusive'** approach which enables businesses to control and manage costs and deployment in a more effective way

From a design perspective the SL Series are elegant displays with their buttonless tempered glass face, rounded corners, super-slim profile and brushed aluminium frame all adding to their eye-catching tablet like aesthetics.



The TOPAZ SL All Inclusive Solution

TOPAZ FREESTANDING SL DISPLAY TPZ-SL-46WF TPZ-SL-55WF



Wireless
Connectivity



Content
Management
System



24/7 Usage



Integrated
Speakers



Wide Viewing
Angle



Images, Video
& Music



Lock Protected
Compartment

PRODUCT HIGHLIGHTS

TABLET STYLE DESIGN

The SL Series all feature edge to edge tempered glass, rounded corners & brushed aluminium frame to create a stylish and sophisticated Tablet style finish ensuring your message stands out and creates the WOW factor.



DESIGNED FOR DIGITAL SIGNAGE

Unlike a TV the TOPAZ™ SL Series are designed specifically for Digital Signage.... This means that they all feature commercial grade panels, can operate in either Portrait or Landscape & that they are designed to run 24/7.... Giving you maximum ROI



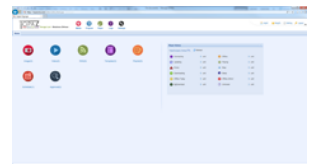
WI-FI BUILT IN

The SL Series Screens have integrated Wi-Fi enabling you to connect seamlessly to the TOAPZ™ CMS system. This ensures you can update your message from any PC in the world!



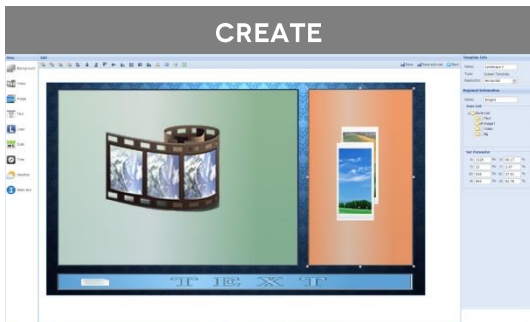
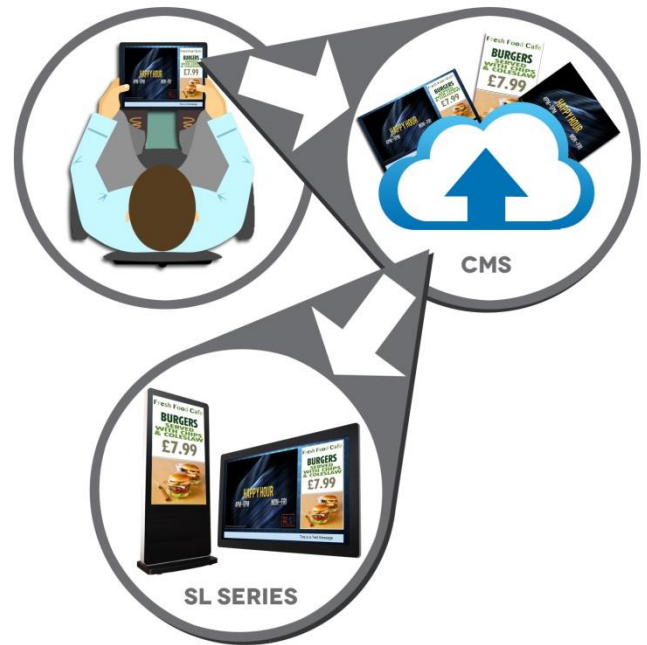
TOPAZ CONTENT MANAGEMENT SYSTEM

The TOPAZ Content Management System [CMS] allows you to log in from any PC in the world using your account password and update, schedule and manage all the displays on your network with NO recurring costs!



TOPAZ CONTENT MANAGEMENT SYSTEM (CMS)

- Manage your content through our **cloud based** content management system from **anywhere in the world**.
- User control enables you to **manage your users** and control who in your organisation has access to update specific areas
- Clients are issued with a username and password for our **secure web portal**, where they can **upload their content** at the click of a button which is stored on our **secure server**.
- Utilize **zoned templates** to present your videos, images, scrolling text messages, web pages and **live** RSS feeds.
- Create multiple playlists to determine exactly when the **relevant content** is displayed.
- Update your screens **individually** or in **groups**, **manually** or **automatically** depending on your requirements.



Create custom layouts - Choose from one of the pre-designed templates or create your own layouts using zones such as video, images, text, web pages, weather and more!

This allows you to deliver targeted content and display your messages exactly how you want to!



Populate your layout – Upload your images and videos and simply drag and drop into your created zones to create your playlist!

Text zones can also be populated through linking to external RSS feeds or custom messaging – ensuring your messages are targeted as well as informative!



Update your screens from anywhere - Content can be uploaded and managed from anywhere in the world via our secure web portal. Simply log in, upload your images and videos to our secure server and send them directly to your screens.

TOPAZ 46" & 55" FREESTANDING SL DISPLAY SPECIFICATIONS

PANEL	DISPLAY SIZE	46 INCH	55 INCH
	RESOLUTION	1080 x 1920	
	ASPECT RATIO	9:16	
	BRIGHTNESS (CD/M2)	500	
	COLOUR	16.7M	
	VIEWING ANGLE	178°	
	CONTRAST RATIO	4000:1	6000:1
AUDIO	SPEAKER TYPE	5W, 8Ω	
AV INPUTS	VIDEO	HDMI, VGA	
	AUDIO	Audio Socket (3.5mm)	
POWER	INPUT VOLTAGE	AC110-240V (50Hz-60Hz)	
	CONSUMPTION	370 W	
MECHANICAL	UNIT SIZE (WXHxD MM)	730 x 1850 x 80	840 x 1960 x 80
	NET WEIGHT	105 kg	120 kg
	GROSS WEIGHT	111 kg	125 kg
	WORKING TEMPERATURE	0°C to 50°C	
MEDIA	MEDIA RESOLUTION	1080 x 1920	
	VIDEO	MPEG, AVI, MOV, MP4, RM, RMVB, TS	
	AUDIO	MP3, WMA	
	IMAGE	JPG, GIF, BMP, PNG	
	SPECIAL	Images, Videos, Audio, Scrolling Text, On/Off Timer, On Screen Clock, Media Rotation	
ACCESSORIES	INCLUDED	Power Cable, HDMI Cable, Remote Control, Key, User Manual	

