

UNIQUE COUNTER TOP SOLUTION WITH THE PATENTED HALO™ DISPLAY



The 10" TOPAZ™ Display has been designed specifically as a counter top solution either used independently or to compliment other TOPAZ™ displays in the venue

The attractive BLUE Halo™ of light surrounding the screen instantly draws attention to the display & your message!

This exciting product is purpose built to operate as an Advertising Display, requiring no computer, and is extremely easy to use by simply inserting a USB stick into the display. The displays are suitable for applications in retail; public service such as hospitals, financial institutions and leisure venues such as golf courses and hotels.

Each display includes an integrated media player that will accept CF or SD memory cards or USB memory

APPLICATIONS

Business Institution: Department store, Supermarket, Travel Agency, Drug Store, etc

Leisure: Restaurant, Bar, Cinema, Gym, Hotel, Sports club, Internet Café, Golf course.

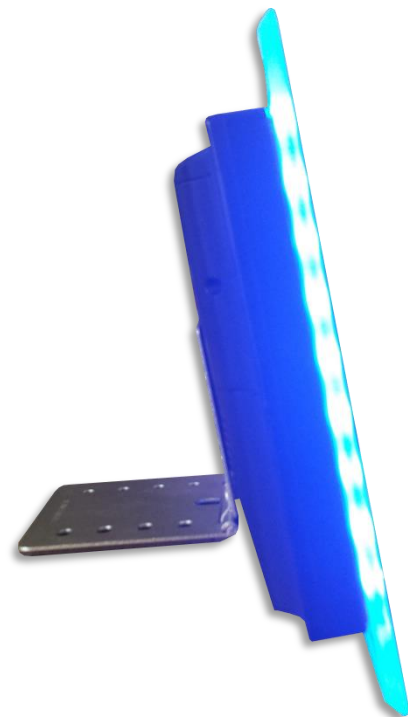
Retail: Department store, Ticket Office, Supermarket, Independent Retailer, Travel Agency, Drug Store, etc

Financial institution: Bank, Stock Market, Currency Exchange centre, Insurance Company, Mortgage stores etc

Public place : Subway, Airport, Bookstore, Exhibition Centre, Stadium, Museum, Conference Centre, Tickets Agency etc.

Public Service: Hospital, School, Post Office etc

Real estate: Apartment Villa, Business building, Show Room, Real estate trade centre, etc



**TOPAZ 10" HALO DISPLAY
TPZ-POS-10**



Unique Halo™ Display



Easy USB Upload



Integrated Speakers



Wide Viewing Angle



Images, Video & Music



24/7 Usage



Lock Protected Compartment

PRODUCT HIGHLIGHTS

HALO™

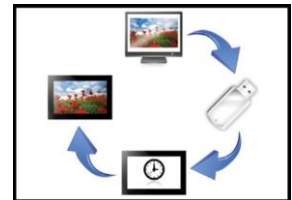
The eye-catching Halo™ feature is a unique and patented design. Halo™ creates a frame around your advertising content helping your messages to stand out from the crowd.



PLUG AND PLAY

With no need for additional hardware simply plug in the screen and update via USB.

The content is then saved on the internal memory so your USB can be removed to safeguard your content!



TOPAZ 10" HALO DISPLAY SPECIFICATIONS

	DISPLAY SIZE	10 INCH HALO
PANEL	RESOLUTION	800 x 480
	ASPECT RATIO	5:3
	BRIGHTNESS (CD/M2)	320
	COLOUR	16.7M
	VIEWING ANGLE	178°
	CONTRAST RATIO	500:1
POWER	INPUT VOLTAGE	DC 12V Adapter
	CONSUMPTION	<24 W
MECHANICAL	UNIT SIZE (WXHXD MM)	276 x 174 x 33
	WORKING TEMPERATURE	0°C to 40°C
	DISPLAY WEIGHT	1kg
	VESA MOUNT	200 x 200, 400 x 400
INTERNAL MEDIA PLAYER	MEDIA RESOLUTION	800 x 480
	INTERNAL MEMORY	2GB SD Card (Supplied)
	USB	USB
	MEDIA FORMATS	VIDEO (MPG1 (VCD), MPG2 (DVD/SVCD). MPG-4 ASP MPEG-5 Advanced Simple Profile vid inc GMC & QPEL support), M-JPEG; File Suffix: *.avi, *.dat *.vob, *.mpg. Picture (JPEG, Progressive JPEG; File Suffixes: *.jpg, AUDIO (MP3),
ACCESSORIES	INCLUDED	Remote Control, Adaptor, User Manual, Stand