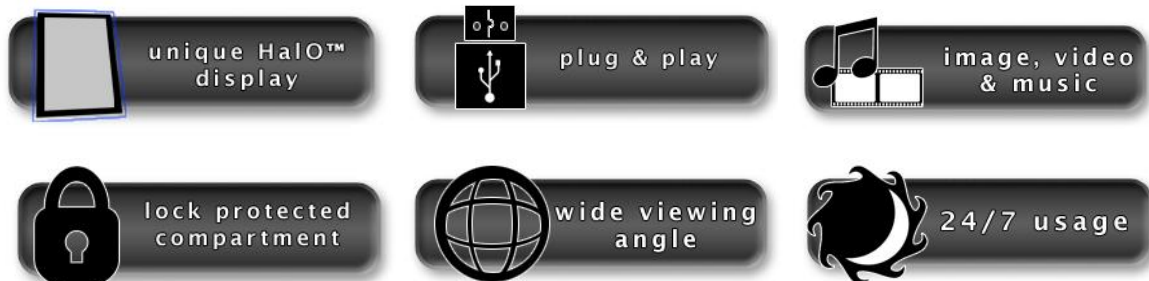


User's Manual



Manual Version TPZ-POS-10.1.0



Our Full Product Range

Full details of all TOPAZ™ products available can be found by visiting our web site

www.topazdigital.com

HaIO Range



10" POS



23" POS



42" HaIO SL

SL Series - Wall Mounted



19", 22", 32", 42", 46", 55"

SL Series - Freestanding



46" & 55"

Touch Series - Wall Mounted



32", 42", 46", 55", 65", 70", 84"

Touch Series - Freestanding



46" & 55"

Safety Instructions



- Please keep the display away from any heat sources. Place the display in a stable and well-ventilated place.
- Please handle with care as acrylic is fragile
- The holes or openings on the display are designed for ventilation. Do not cover or block the ventilation holes or openings with any objects.
- Remove protective covering from the screen before you use the display.
- Shut off the power supply before cleaning. Use a soft lint-free cloth instead of a tissue to wipe the screen.
- You may use a glass cleaner to clean the product as required. However, never spray the cleaner directly onto the display surface.
- Do not attempt to repair this product yourself! Any modification to the product or repair carried out that is not done with our authorization may invalidate the warranty and could be potentially dangerous.
- If you have a problem that cannot be solved using the "Troubleshooting" guidelines, please contact your supplier.

Quick Start Guide

This section of the guide is to allow rapid set up and use of the unit. Please refer to the main part of the User Guide for full information on use of the unit.

Please follow the steps detailed below:

1. Unpack unit and place in desired location
2. Take the power lead from the accessories bag, insert the lead into the side of the screen and connect to mains outlet. Switch the display on using the switch next to the power socket.. You will be greeted by the start-up screen.
3. Collect the files you wish to display and make sure they are supported by the unit (see Section 2.2)
4. On a PC copy the files you want to play onto an empty USB drive. These should be in the root directory (without putting them into a folder). Remove USB from PC.
5. Insert USB drive into the USB port located on the side of the unit next to the on/off switch (see Figure 1).
6. The screen should indicate that it is copying the files onto the unit. Please note that all files currently resident in the unit will be deleted. Once completed, the screen will display a message to remove the USB drive.
7. Remove the USB drive and the unit will play the stored files in a loop.



USB Port

Contents:

| | |
|---|----|
| 1. Introduction..... | 6 |
| 1.1 Box Contents..... | 6 |
| 1.2 Product Overview..... | 6 |
| 1.3 Remote Control..... | 7 |
| 1.4 Button Functions..... | 7 |
| 1.5 Replacing the Remote Control Battery..... | 8 |
| 1.6 Menu Operation | 9 |
| 2. System Operation..... | 13 |
| 2.1 System Functions..... | 13 |
| 2.2 Supported Media Files..... | 14 |
| 2.3 Steps to Load Media Files..... | 14 |
| 3. Installation..... | 15 |
| 3.1 Wall Mounting..... | 15 |
| 3.2 Counter Top..... | 16 |
| 4. F.A.Qs and Troubleshooting Guide | 17 |
| 4.1 How do I play PowerPoint presentations on my display?..... | 17 |
| 4.1.1 Option 1 (for plain slides with no animation): | 17 |
| 4.1.2 Options 2 (for presentations with animation): | 17 |
| 4.2 Video Conversion | 18 |
| 4.2.1 Format Factory..... | 18 |
| 4.3 My Remote Control does not appear to be working..... | 20 |
| 4.4 My media file does not fit properly on the screen..... | 20 |
| 4.5 My media file will not display or is missing from the playlist..... | 20 |
| 4.6 My media files will not update..... | 22 |
| 4.7 My media will not loop..... | 22 |
| 5. Panel Specifications..... | 22 |

1. Introduction

Thank you for choosing the TOPAZ™ POS range for your digital signage. Please read carefully and follow all instructions in the manual before first use.

The product should not be exposed to liquids, dripping or splashing and no objects filled with liquids, such as vases, should be placed on or next to the product.

For user convenience, a number of operations can be performed through the remote control.

Attention:

1. Do not change any default setting if it is unnecessary.
2. Keep the product far away from water during installation and use.

1.1 Box Contents

- 1 x TOPAZ™ 10" POS Display
- 1 x Mounting Bracket [connected to display]
- 1 x Power Cable
- 1 x CD (User Manual and Software)
- 1 x Remote Control

1.2 Product Overview

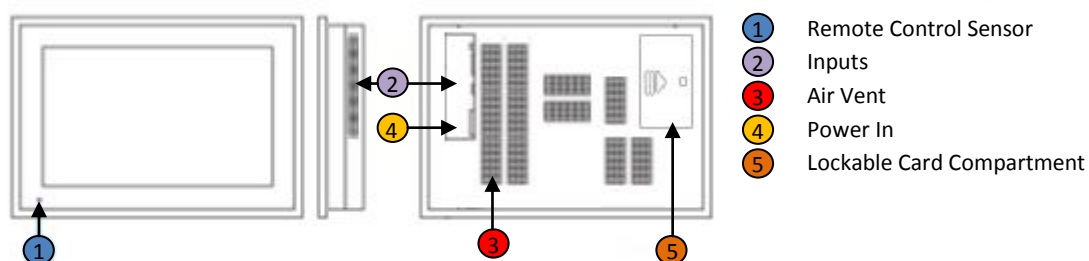
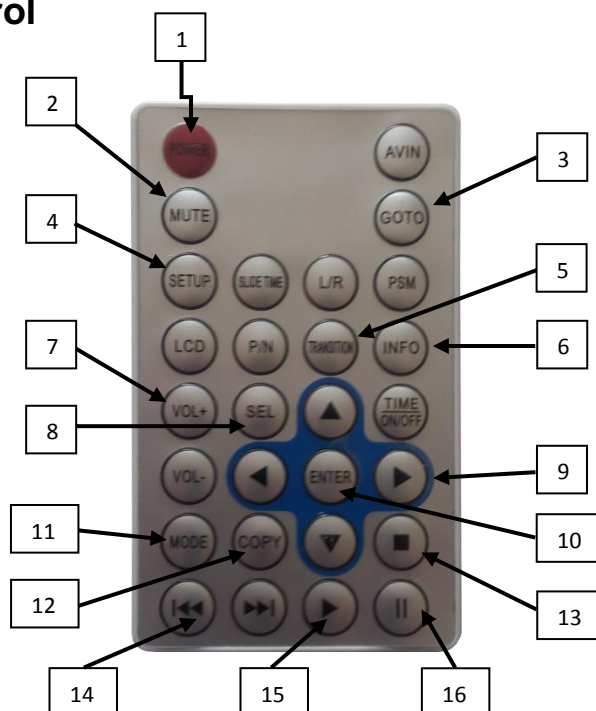


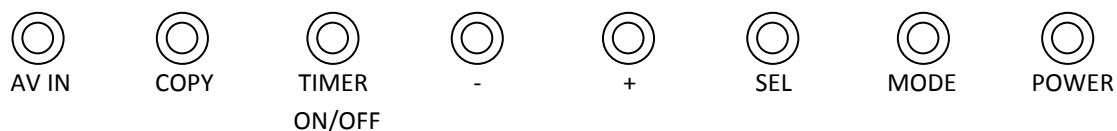
Figure 2 Product Overview

1.3 Remote Control



| | | |
|----|-------------------|--|
| 1 | POWER | Switch between on and off |
| 2 | MUTE | Turn the sound on and off |
| 3 | GOTO | After inserting different memory cards, you can check storage list. Selecting one card or pressing this button to enter sort media file choice, can sort play or auto play all the media files |
| 4 | SETUP | Enter basic function settings when it stops playing |
| 5 | TRANSITION | (file edit mode) recover |
| 6 | INFO | enter into file edit mode |
| 7 | VOL+ VOL- | Volume increase/decrease |
| 8 | SEL | (file edit mode) set target media card |
| 9 | ◀▶▲▼ | Move the direction of the cursor |
| 10 | ENTER | Confirm the inputting content |
| 11 | MODE | switch to repeat mode (repeat one/repeat all/repeat off) |
| 12 | COPY | (file edit mode) clear |
| 13 | ■ | Stop |
| 14 | ◀▶ | Go to previous/next frame/picture/music/movie, etc |
| 15 | ▶ | Play |
| 16 | | Pause |

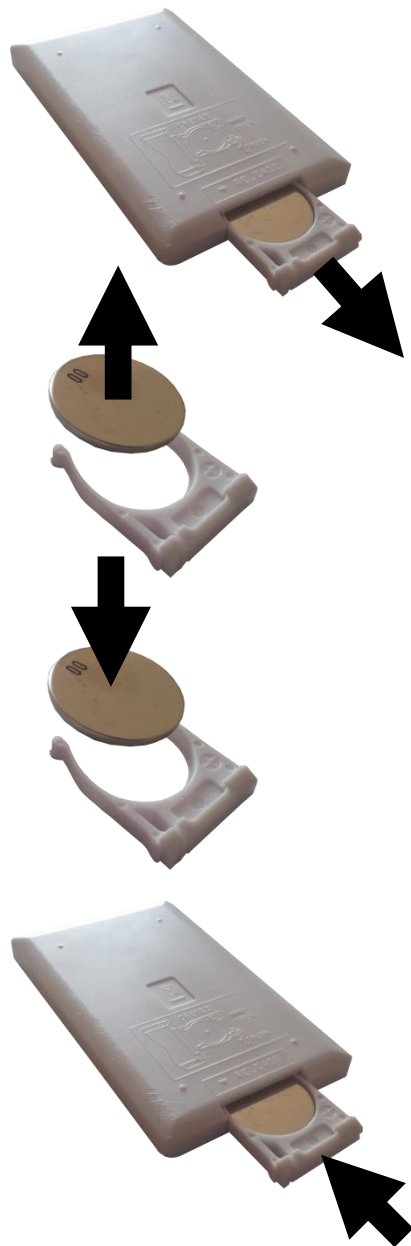
1.4 Button functions (on rear of unit)



The function and operation of the above buttons, please refer to the corresponding buttons on the remote control.

1.5 Replacing the Remote Control Battery

1. Open the battery cover
2. Take out the battery box in the right direction as shown in the picture below
3. Remove the used battery
4. Insert the new battery with its terminals corresponding to the indicator
5. Put the cover back in



1.6 Menu Operation

Press "SETUP" to enter Main Menu, press ↑↓ to select the right item, press "PLAY" to confirm selection. Choose EXIT to exit the Main Menu.

| Main Menu |
|-----------------|
| General Setup |
| Calendar Setup |
| Timer Setup |
| LCD Setup |
| Slideshow Setup |

General Setup:

Press ENTER on General Setup to enter menu.

OSD Language

| General Page | |
|--------------|----------|
| OSD Language | English |
| Timer Mode | Chinese |
| Auto Start | Japanese |
| Screen Saver | |

Timer Mode

To set the Timer Mode to either DAY MODE or WEEK MODE, press the SETUP button to open the MAIN MENU / GENERAL SETUP / TIMER MODE, then select either Day or WEEK mode:

You can set up to five switch machine time.

See specific settings please refer to (SEVEN.: Function of TIMER ON/OFF)

| General Page | |
|--------------|-----------|
| OSD Language | |
| Timer Mode | Day Mode |
| Auto Start | Week Mode |
| Screen Saver | |

Auto Start

When setting the auto play option to ON, the player will automatically play any media files stored immediately after powering on in a continuous loop.

Open Main Menu/General Setup/Auto Start to setup the auto play function by pushing the 'setup' button.

| General Page | |
|--------------|-----|
| OSD Language | |
| Timer Mode | OFF |
| Auto Start | ON |
| Screen Saver | |

Screen Saver

Change the screensaver to on or off by opening the Main Menu/General Setup/Auto Start to setup the auto play function by pushing the 'setup' button.

| General Page | |
|----------------------------|-----|
| OSD Language | |
| Timer Mode | |
| Auto Start | ON |
| Screen Saver —————→ | OFF |

Calendar Setup:

Press ENTER on Calendar Setup to enter menu.

Calendar

To change the date of the unit, go to the Main Menu/Calendar Setup/Calendar/Calendar and press ENTER.

| Calendar Page | |
|------------------------|----------|
| Calendar —————→ | Calendar |
| Time Display | |
| Time | |
| | |
| Main Page | |

Time Display

The unit is able to display the current time in the top right corner of the screen over the top of the playing media files. To change this option to ON or OFF, go to the Main Menu/Calendar Setup/Time Display and press ENTER on ON or OFF.

| Calendar Page | |
|----------------------------|-----|
| Calendar | |
| Time Display —————→ | ON |
| Time | OFF |
| | |
| Main Page | |

Time

To change the time of the unit, go to the Main Menu/Calendar Setup/Time and press ENTER.

| Calendar Page | |
|--------------------|----------|
| Calendar | Calendar |
| Time Display | |
| Time —————→ | ON |
| | OFF |
| Main Page | |

Timer Setup (day mode):

This menu allows the user to set 5 timers for when the unit will power on and off.

To change between Day Mode and Week Mode, see Timer Mode on Page 10.

Press ENTER on Timer Setup to enter menu.

| Timer Page | |
|------------|---------|
| Every Day | → Timer |
| | |
| Main Page | |

Timer Setup (week mode):

To change between Day Mode and Week Mode, see Timer Mode on Page 10.

| Timer Page | |
|------------|---------|
| Sunday | → Timer |
| Monday | |
| Tuesday | |
| Wednesday | |
| Thursday | |
| Friday | |
| Saturday | |

Steps of using Timer Setup function:

- When the unit is in STOP mode, press SETUP and enter the SETUP, MENU/GENERAL SETUP. Choose TIMER Mode and choose DAY MODE or WEEK MODE.
 - DAY Mode, the timer switch on will effect every day, each day has the same timer on/off time.
 - WEEKLY mode, the timer switch on the weekly, Sunday, Monday, Tuesday, Saturday separately in different settings, set the timer switch specific time difference effectively, namely: a group of Sunday, a group Monday.
- Press SETUP and choose CALENDAR SETUP/CALENDAR/CALENDAR enter the date setting page. Set the current date and time, time is 24-hour format, set for a total of four categories: time, month, year, date, use the ►► button on the remote to move the cursor between date, time and year.
Such as:
 - In the **date** section, use the arrow keys to move the cursor to the current date;
 - Press ►► to go to the **time** section, use the left and right keys to move the hours, minutes, seconds to different places, use the up and down keys to change value on the cursor position (hours, minutes, seconds);
 - Press ►► to go to the **month and year** section, use the left and right keys to change the value of the month/year.

Press ENTER key to confirm the changes to values.

3. In the SETUP MENU / TIMER SETUP, GO TO THE TIMER ON/OFF setting page, when you choose WEEK MODE, the timer page will list SUNDAY, MONDAY, TUESDAY, WEDNESDAY, THURSDAY, FRIDAY, SATURDAY. You can set individuals times on different days of every week, the specific setting and TIMER SETUP set the same.
4. SET EVERY DAY page, there are five items grouped timer switch settings can be set, each set ID includes an item that ON time and an OFF time. This is a timer switch time.
5. The timer on/off setting will be effective when the time is ON.

If one group setup as ON time = OFF time, means this group is invalid.

If all five groups are set up ON time = OFF time means the whole day setting is invalid. The player will switch on the whole day (24 hours) this means TIMER OFF.

The system reset default invalid timer switch, each time set up to 00, timer on/off is OFF.

If the time setting of the timer switch is non-logical setting when you turn the machine ON, the machine will all loaded these groups into the machine, the judicious logic and timer switch can run.

1. In the SET TIMER page, use the left and right keys to move the cursor and set a different item. Use the cursor up and down keys to adjust the settings in the column. Move cursor up and down keys to adjust the settings in the column. Move cursor to the YES position, press ENTER key to confirm the settings save and exit, move the cursor to the YES position, press ENTER key to cancel the settings save and exit.

2. System Operation

2.1 System Functions

1. File Edit Mode (option)

You can enter file edit menu by pushing info button in the stop playing mode. From here you can copy, move, cancel file.

2. Media card instruction

CF Card

Normally used for storing media files, also you can play or transfer the files in the SD card. And copy files on the USB to the SD card.

SD Card

Normally used for storing media files, also you can play or transfer the files in the SD card. And copy files on the USB to the SD card.

USB device

Normally used for storing media files, also you can play or transfer the files on USB.

NAND FLASH (option)

Usually used for storing the media files also can play directly from it.

(When you insert the CF/SD card and USB at the same time, it will preferentially play CF media files; if you remove the CF card, it will automatically read and play files on the SD card; if the SD card is removed, it will read the USB.

The priority to read media cards is 1. CF, 2. SD, 3. USB.

The player will read SD card first if a CF card without files is inserted. Will read USB first if inserted with a blank SD card. The USB reading speed is the slowest. It is not advised to use USB to play media files; normally use CF card to play media files (USB is used as a means to transfer the media files. It is the carrier of files to copy.)

- 1) All of the media files should be the same format, for example it can support suffix .TS **OR** .MPG video file, not both.
- 2) The resolution, codec, code rate, frame rate should be the same for all video files, and the audio coder, sample rate should be the same for all audio files.

2.2 Supported Media Files

| Sort | Codec | Sort | Suffixes |
|--|---|---------------------------|--|
| AUDIO | MP3 | AUDIO file support | *.mp3 |
| VIDEO | MPG1 (VCD) MPG2 (DVD/SVCD) Divx Xvid M-JPEG | VIDEO file support | *.avi *.dat *.vob *.mpg |
| PHOTO | JPEG PROGRESSIVE JPEG | PHOTO file support | *.jpg |
| Max Resolution (video) – 720 x 576 Max Resolution (jpg) – 800 x 480 | | | |

NOTE: To display videos on the unit, use the file formats listed in the table above. If your video is not in one of these formats, it will need to be converted using a free video converter such as Format Factory (www.formatoz.com)

2.3 Steps to Load Media Files

1. Copy the files you want to play on to USB drive in the root directory (without putting them into a folder).
2. Insert USB drive into the USB slot (see Figure 1 and Figure 3).
3. This will automatically delete any files currently stored on the unit's internal memory.
4. The files will then be copied to the internal memory and once completely loaded it will ask you to remove USB drive.
5. Remove the USB drive.
6. The unit will now play the stored files.

3. Installation

3.1 Wall Mounting

1. Empty contents of the box and test the screen's power supply before mounting.
2. Clean the wall and mark out the position of the mounting plate.

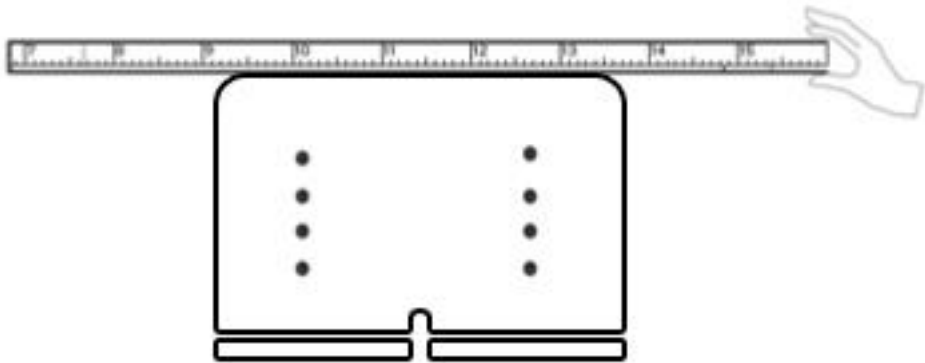


Figure 4 Mark out the mounting plate

3. Mark out the plates hole positions on the wall for drilling (you can drill your own holes in the mounting plate if required).

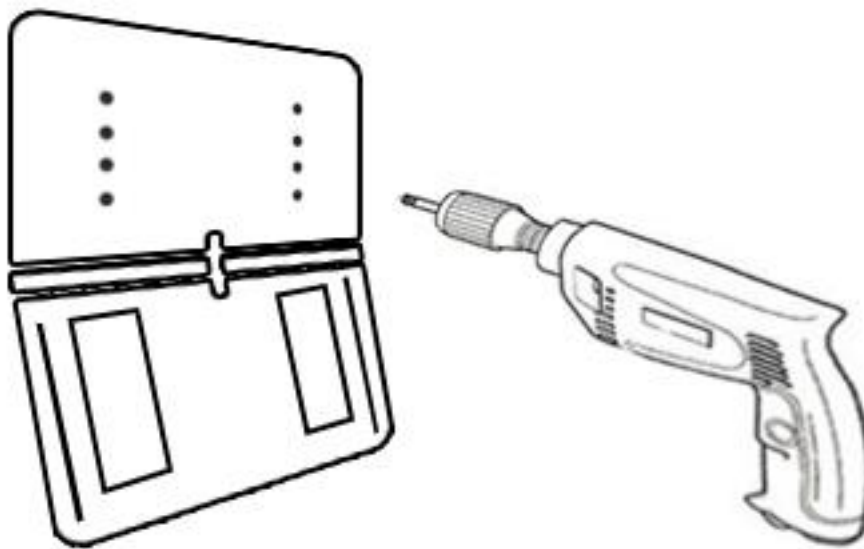


Figure 5 Drill holes

4. Once holes are drilled into the wall insert wall plugs and fix the plate to the wall using additional screws.

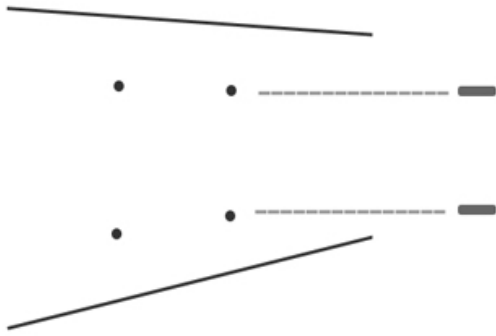
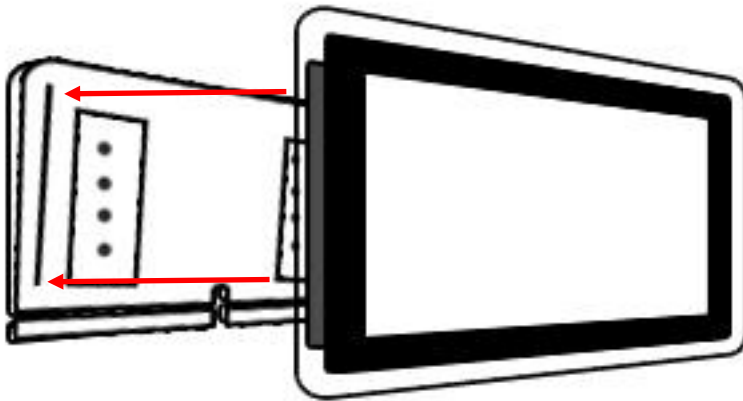


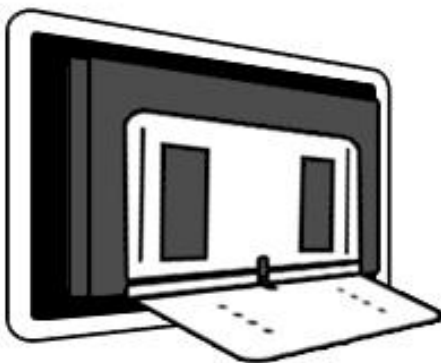
Figure 6 Insert wall plugs

5. Once secured to the wall, hang the display on the bracket and connect to the mains.



3.2 Counter Top

To place on counter top, rotate back of bracket to approximately 80 degree angle and unit will stand.



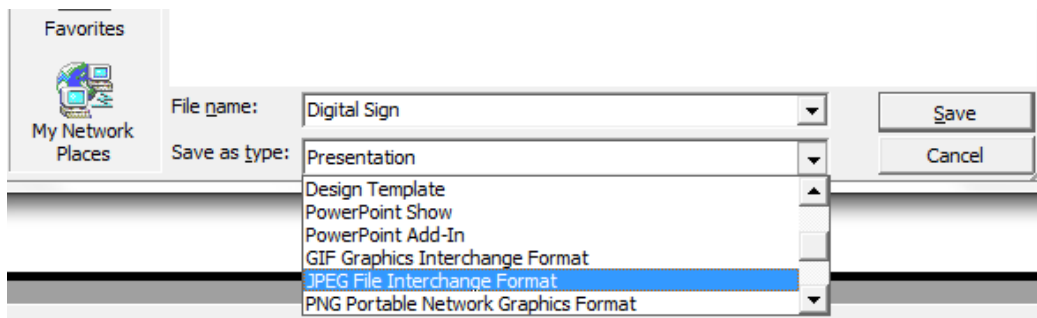
4. F.A.Qs and Troubleshooting Guide

4.1 How do I play PowerPoint presentations on my display?

4.1.1 Option 1 (for plain slides with no animation):

You can save the PowerPoint presentation as a JPEG File Interchange Format (.JPG). Microsoft PowerPoint software allows the user to do this

- 1) Create or open a PowerPoint presentation.
- 2) Click File > Save As
- 3) Enter a File name
- 4) Click on "Save as type" scroll down and find the file extension "JPEG file interchange format", as shown in the image below.



- 5) Click Save.
- 6) A message will appear asking if you would like to save all slides as JPEG's
- 7) Once you have selected your option, The JPEG images will be saved and are ready to use within a playlist or to upload to a storage device.

4.1.2 Options 2 (for presentations with animation):

You can convert the PowerPoint presentation to a MPEG video clip. For the best display quality you should use the MPEG2 format which gives the best display quality. We suggest that you use the following software:

Software Name: Wondershare PPT2DVD

Web link: <http://www.ppt-to-dvd.com/ppt2dvd/overview.html> :

Select Video Format: PowerPoint to MPEG2 Video Settings:

- TV Standard: NTSC (29.97fps);
- Standard: Standard DVD;
- Encode Size: Width 720, Height 576.

4.2 Video Conversion

There are two possible tools for converting video

4.2.1 Format Factory

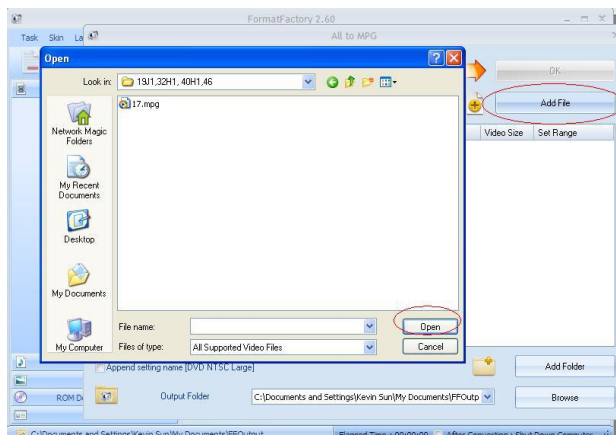
This is a free multipurpose convertor that can be used for normal definition

Normal Definition

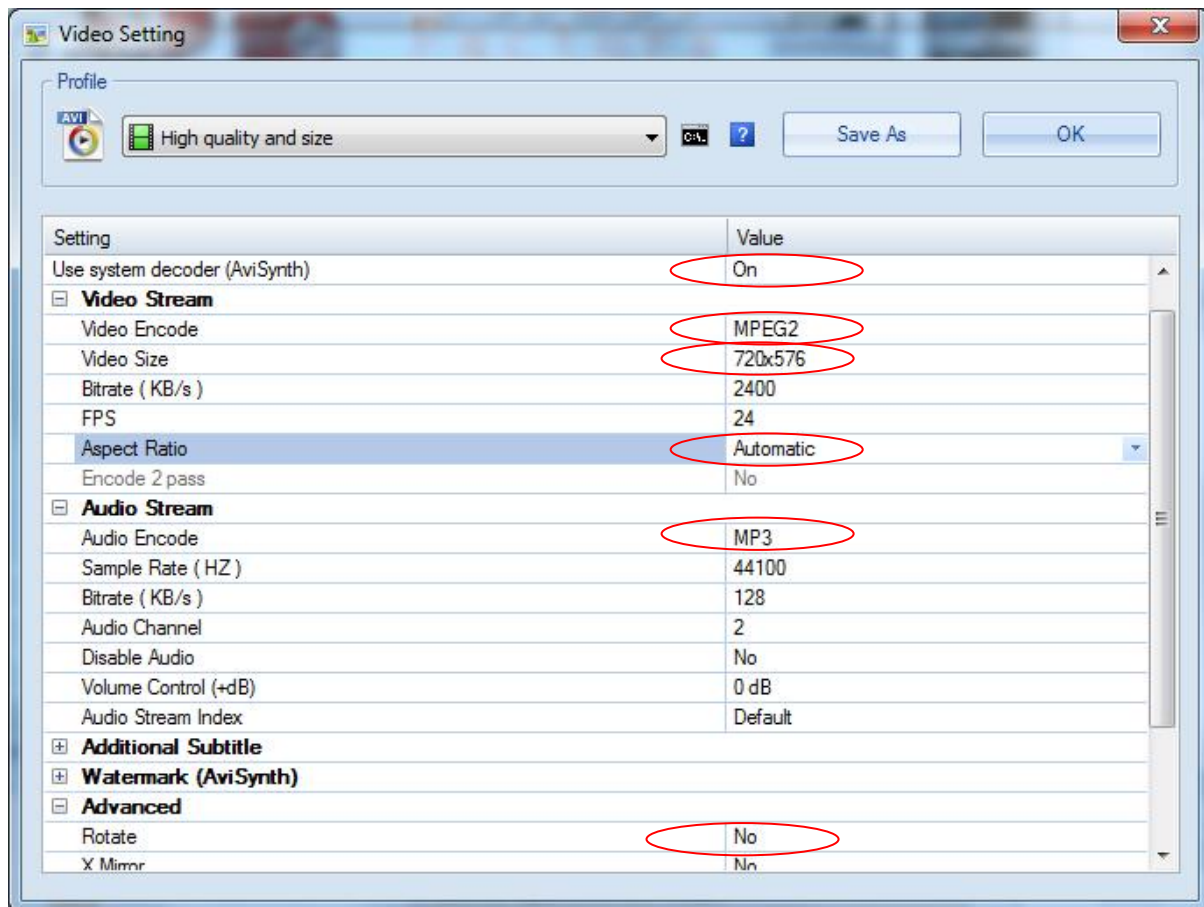
1. Download a free convertor (Windows) called Format Factory which can be found at
<http://www.formatoz.com/>
2. Start the Software (picture 1).



3. On the left hand window pane select the 'Video' conversion options.
4. Select the 'All to AVI' conversion
5. Click the 'Add File' button and locate the file to be converted.



6. Click the 'Output Setting' button and modify it to look like the image shown below. A number of important settings have been highlighted.
7. Select 'OK' to save these changes and then Press 'OK' button to goto main screen



8. Press the 'Start' button along the top to start the conversion. Once completed, press the 'Output Folder' to see the converted video.



4.3 My Remote Control does not appear to be working

The remote controls have been design to have a limited range as some applications require several screens close together and individual control of each. If you are experiencing difficulties in operating your remote please follow these steps before calling your supplier.

- 1) Try pressing "SETUP" with the remote a few inches away from the unit just below the display (see section 1.2). If this does not bring up the menu screen then go on to step 2.
- 2) Replace the batteries in you Remote Control (see section 1.4). If this does not solve the problem then please contact your supplier.

4.4 My media file does not fit properly on the screen

If your media is being displayed with black edges please refer to section 2.2. This has happened because the file is not 16:9 aspect ratio (720x576). Please resize file to 720x576 pixels and try loading the media onto the display once again.

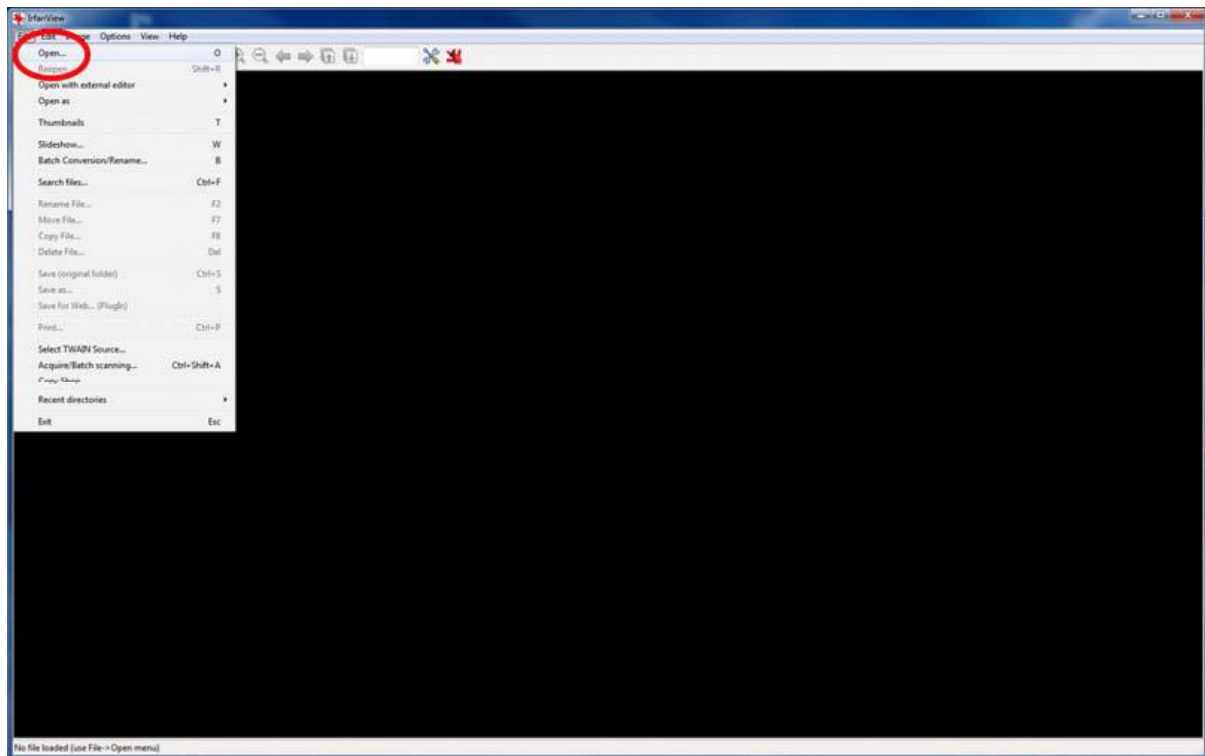
4.5 My media file will not display or is missing from the playlist

In this situation the first step to take to find the root of the problem is to start with a blank USB drive. Copy 1 file onto the blank USB drive and insert this into the unit, ensuring that the file name is 11 characters or less. If this works and the file displays then re-name all the files that are 12 characters or more to have shorter file names.

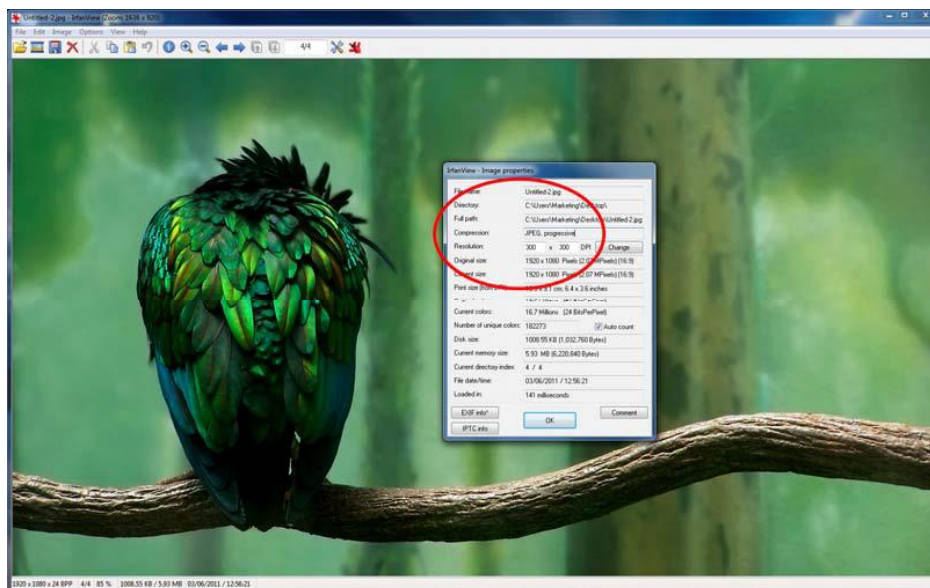
If this does not work please check first that the media file is the correct size to fit the screen –720x576 pixels. If it is any bigger than this there is a danger the media file will not display.

For images, check that it is around 1-2 MB in size and that it is a baseline JPEG not a progressive one – as these will be skipped. This can be checked by using free software called IrfanView.

- 1) Download Irfanview from
http://download.cnet.com/IrfanView/3000-2192_4-10021962.html?part=dl-IrfanView&subj=dl&tag=button
- 2) Launch the software then open image file within the program.



- 3) In the toolbar click on “Image” > “Information”.
- 4) This brings up the “Image property options”.



- 5) Check the compression of the image, if it says “JPEG” the image is a baseline JPEG, however if it says “JPEG, progressive” then you must convert the image using software such as Adobe Photoshop.

4.6 My media files will not update

If you are have problems updating your display follow these steps to ensure it is not a technical issue.

- 1) Ensure that there are no other files or folders stored on the USB drive.
- 2) Check the USB drive for any additional self installation software, if it has this format the drive.
- 3) Make sure the USB drive is firmly inserted into USB slot
- 4) Before contacting your supplier try another USB drive to be certain this is not the fault.

4.7 My media will not loop

If you are having issues with your content not playing over from the start once it has come to an end, then you will have to do a system reset.

- 1) To do this press "SETUP" on your remote control.
- 2) Go to "SYSTEM" and press "PLAY".
- 3) Go to "Restore Default" and press "PLAY".
- 4) This will clear the unit's memory but not the time and date details, try your media again before contacting your supplier.

For further information or technical advice please contact your supplier quoting your model number & serial number.

5 10.1 inch Panel Specification

| | |
|------------------------------|---|
| Type | TFT LCD |
| Monitor size / profile ratio | 10.1 INCH (Digital LCD, LED Backlight) / 16:9 |
| Display resolution | 800 x 3 (RGB) x 480 |
| Dot pitch | 0.2745 (W) x 0.2745 (H) |
| Active area | 219.6 (W) x 131.76 (H) |
| Brightness | 320cd/m2 |
| Contrast ratio | 500:1 |
| Module size | 235 (W) x 145.9 (H) x 5.4 (D) |
| View Angle | 65 (Right)/65 (Left)/ 45 (Top)/65 (Bottom) |
| Power Supply | DC:12V |
| Power Consumption | <=24W |
| OSD menu language | English/Chinese/Japanese |
| Medium | CF Card/ SD Card/ USB |
| Speaker output | 2Wx2 |