

TOPAZ™ Wall Mounted Touch Screens Hardware User Manual



Our Full Product Range

Full details of all TOPAZ™ products available can be found by visiting our web site

www.topazdigital.com

HaIO Range



10" POS



23" POS



42" HaIO SL

SL Series - Wall Mounted



19", 22", 32", 42", 46", 55"

SL Series - Freestanding



46" & 55"

Touch Series - Wall Mounted



32", 42", 46", 55", 65", 70", 84"

Touch Series - Freestanding



46" & 55"

Safety Instructions



- Please keep the display away from any heat sources such as electric radiators or direct sunlight. Place the display in a stable and well-ventilated place.
- Please handle with care so as to not damage the LCD panel.
- The holes or openings on the display are designed for ventilation. Do not cover or block the ventilation holes or openings with any objects.
- Remove protective covering from the screen before you use the display.
- As the display surface is vulnerable to scratches, avoid touching the surface with sharp pen point.
- Shut off the power supply before cleaning. Use a soft lint-free cloth instead of a tissue to wipe the screen.
- You may use a glass cleaner to clean the product as required. However, never spray the cleaner directly onto the display surface.
- Do not attempt to repair this product yourself! Improperly disassembly of the product may invalidate the warranty and lead to possible danger!

If you have a problem that cannot be solved using the "Troubleshooting" guidelines, please contact your supplier.

Quick Start Guide (connecting to PC)

This section of the guide is to allow rapid set up and use of the unit. Please refer to the main part of the User Guide for full information on use of the unit.

Please follow the steps detailed below:

1. Unpack unit and place in desired location along with your PC.
2. Find the VGA and Touch ports on the Screen interface; connect them to PC via appropriate cables (as shown below).

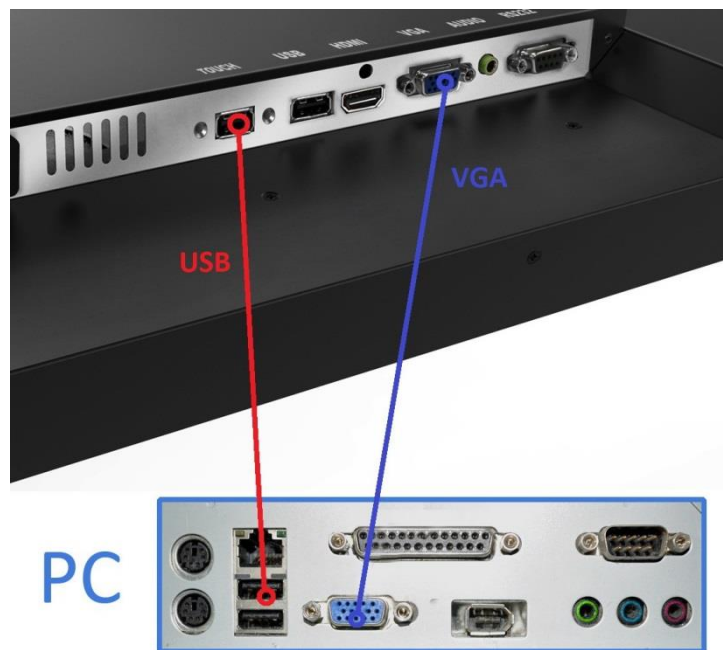


Figure 1 Screen to PC Connections

3. Power **ON** the PC.
4. Take the power lead from the accessories bag, insert the lead into the screen and connect to mains outlet. Then turn ON by the **“AC Switch”** located next to the power input.
5. If the screen does not display the signal from the PC then connect press the **“SOURCE”** button on the remote control and navigate to **“PC-RGB”** and press **“PLAY”**.

PC-RGB
HDMI
DMP

Contents:

1.	Introduction.....	6
1.1	Box Contents.....	6
1.2	Product Overview	6
1.3	Remote Control.....	7
1.4	Replacing the Remote Control Battery	8
2.	Menu Operation.....	9
2.1	Inputs	12
3.	Set Up.....	13
3.1	Ventilation	13
3.2	Connecting to PC	14
3.3	Internal Media Player	16
3.3.1	Usage	16
3.3.2	Supported Media Formats.....	17
4.	F.A.Qs and Troubleshooting Guide.....	18
4.1	My Screen is not displaying what is on my PC	18
4.1.1	Input Source.....	18
4.1.2	Display/monitor button on PC keyboard	18
4.2	My display goes into standby mode	19
4.2.1	Power saving function	19
4.3	What are my screen's refresh rates?	20
4.4	My monitor's image is unstable, unfocused or swimming	20

Table of Figures

Figure 1 Screen to PC Connections	3
Figure 2 Product Overview	6
Figure 3 Screen Inputs	12
Figure 4 Ventilation Area.....	13
Figure 5 Screen to PC Connections	14
Figure 6 USB Port Location.....	16

I. Introduction

Congratulations on your purchase of our product. Please read carefully and follow all instructions in the manual before first use.

The product should not be exposed to liquids dripping or splashing and no objects filled with liquids, such as vases, should be placed on the product.

For user convenience, a number of operations can be performed through the remote control.

Attention:

1. Do not change any default setting when it is unnecessary.
2. Keep the product far away from water during installation and use.

I.1 Box Contents

1xWall-mounted Multi Touch Screen Display

1xPower Cable

1xRemote Control (with AAA batteries)

1xUSB male to male Cable

1xCD (User Manual)

IMPORTANT: Please retain your screen's packaging for the duration of your warranty.

I.2 Product Overview



Figure 2 Product Overview

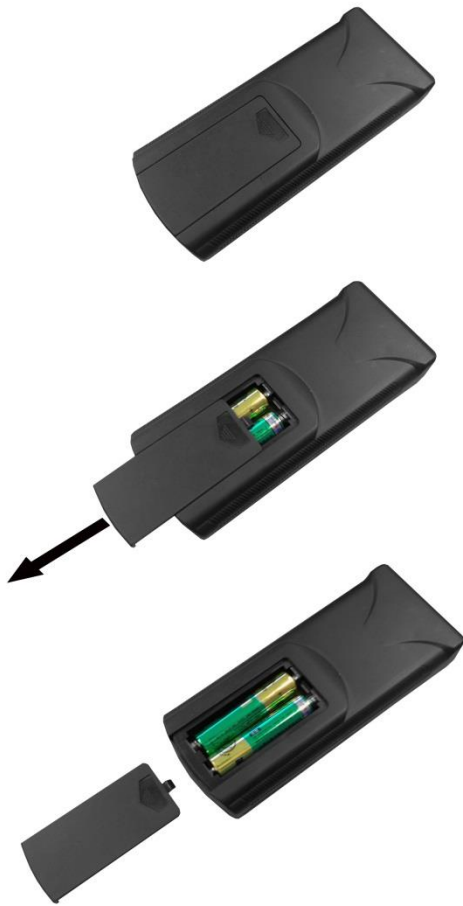
I.3 Remote Control



Button	Function
POWER/⏻	Power on or off
MENU	Display settings
SETUP	Menu settings
SOURCE/↻	Input source
▲	Up (navigation)
◀	Left (navigation)
▶	Right (navigation)
▼	Down (navigation)
▶/	Play media
■	Stop media
⏮	Previous
⏭	Next
🔇	Display settings
🔊+	Raise volume
🔊-	Lower volume

I.4 Replacing the Remote Control Battery

1. Slide the battery cover off, as shown below.
2. Remove the used batteries.
4. Insert the two new AAA batteries with their terminals corresponding to the indicators.
5. Put the cover back on.



2. Menu Operation

The Menu includes the following menus: Picture, Sound, Time and Option.

Press “MENU” to bring up the menus, press ←→ to select the desired menu and ↑↓ to select the desired item, press “PLAY” to confirm selection. Press “menu” at any time to go back or exit.

Picture

Here is where you can edit settings such as brightness, contrast, colour temperature and backlight brightness. Any settings that you change can be reset back to default at any time.

Picture Mode	<Standard>	or Mild/User/Auto/Dynamic	
	User	Contrast	50
		Brightness	50
		Colour	50
		Sharpness	50
		Tint	50
Color Temperature	<Medium>	or Warm/User/Cool	
Aspect Ratio	<16:9>	or Auto/4:3/Zoom1/Zoom2/Just Scan	
Noise Reduction			
PC Setup			
Backlight	<100>	or 1-100	

Sound

In this menu you can adjust all of the sound settings for your touch screen such as the sound mode EQ settings or the left/right balance. Any settings that you change can be reset back to default at any time.

Sound Mode	<Standard>	or Music/Movie/Sports/User
Balance	<0>	-50(left) to +50(right)
Auto Volume	<Off>	or On
Surround Sound	<Off>	or Surround
EQ	120 Hz	50
	500 Hz	50
	1.5K Hz	50
	5K Hz	50
	10K Hz	50

Time

Here you can set a time and date for your screen as well as scheduling daily on/off times for the built in power timer. You can also adjust at what temperature the internal fans become active.

Clock	<DATE and TIME>	Date Month Year Hour Minute
Off Time	<Off>	Hour Minute
On Time	<Off>	Hour Minute
Temperature	XX	(Current screen temperature)

Option

Under this menu are settings like on screen display language, on screen display duration time, and the video wall tiling settings. You can also restore all of the menus default settings and lock your screen so as you have to enter a password to access any of the menus.

OSD Language	<English>	or Franais/Espanol/ Poruguês/Arabic/中文
Restore Default Setting	(Resets menu settings to default)	
Blending	<Low>	or Middle/High/Off
OSD Duration	<Off>	or 5sec/10sec/15sec
Multi Setup	Board ID	I
	Current X	I
	Current Y	I
	Total X	I
	Total Y	I
Multi Crop	Left Edge	0
	Up Edge	0
	Right Edge	0
	Down Edge	0
Copy Start		
Lock System	<Off>	or On (Password – 1842)

Switching between inputs

One crucial feature that does not appear on the Main Menu is selecting the input source. This is done by first pressing “SOURCE” and then scrolling down to the desired input source and select by pressing “PLAY”.

PC-RGB
HDMI
DMP

2.1 Inputs

TOUCH – Universal Serial Bus (for Infrared touch panel)

USB (DMP) – Universal Serial Bus (for internal media player)

HDMI – High Definition Multimedia Interface Signal Input

VGA (PC-RGB) – Video Graphics Array Signal Input

AUDIO – 3.5mm Stereo Jack (for audio input)

RS232 – Remote communication transmission



Figure 3 Screen Inputs

3. Set Up

3.1 Ventilation

If you are mounting your touch screen in an enclosed space or recessed area please leave adequate room between the touch screen and the enclosure to allow heat to disperse. We recommend the following the following space for ventilation.

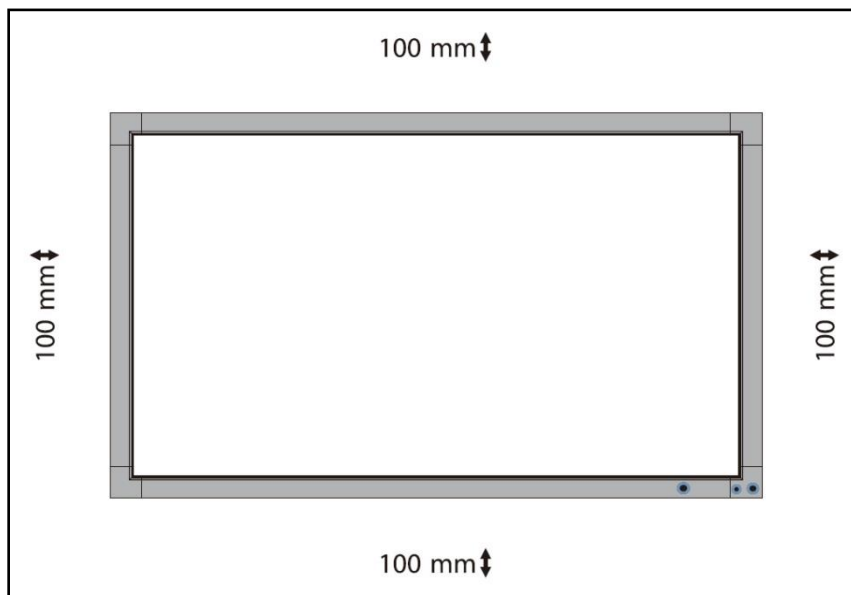


Figure 4 Ventilation Area

3.2 Connecting to PC

The touch screen must be connected to the PC in two ways: visually and interactively. The recommended visual connection is via the VGA Cable meaning that the display acts like a monitor for the PC. The touch function is achieved by linking the Infrared touch sensors around the screen to the PC via the USB Cable (included).

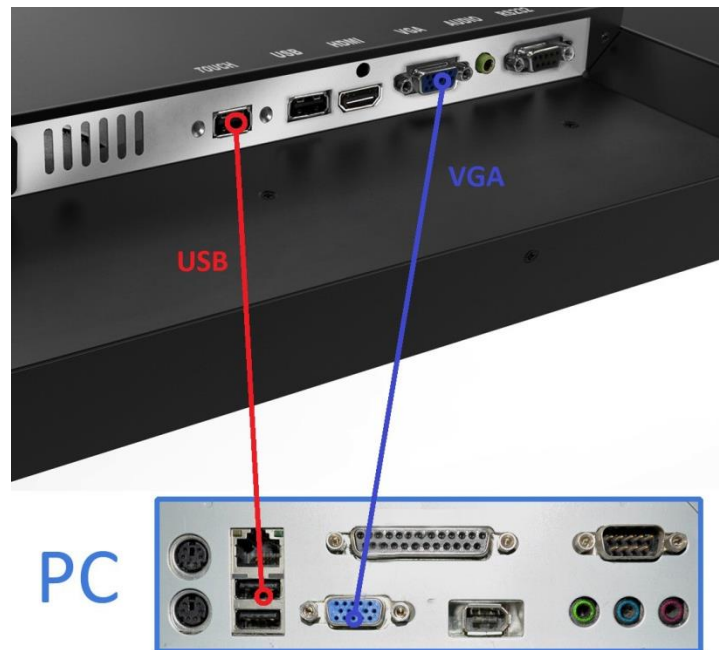


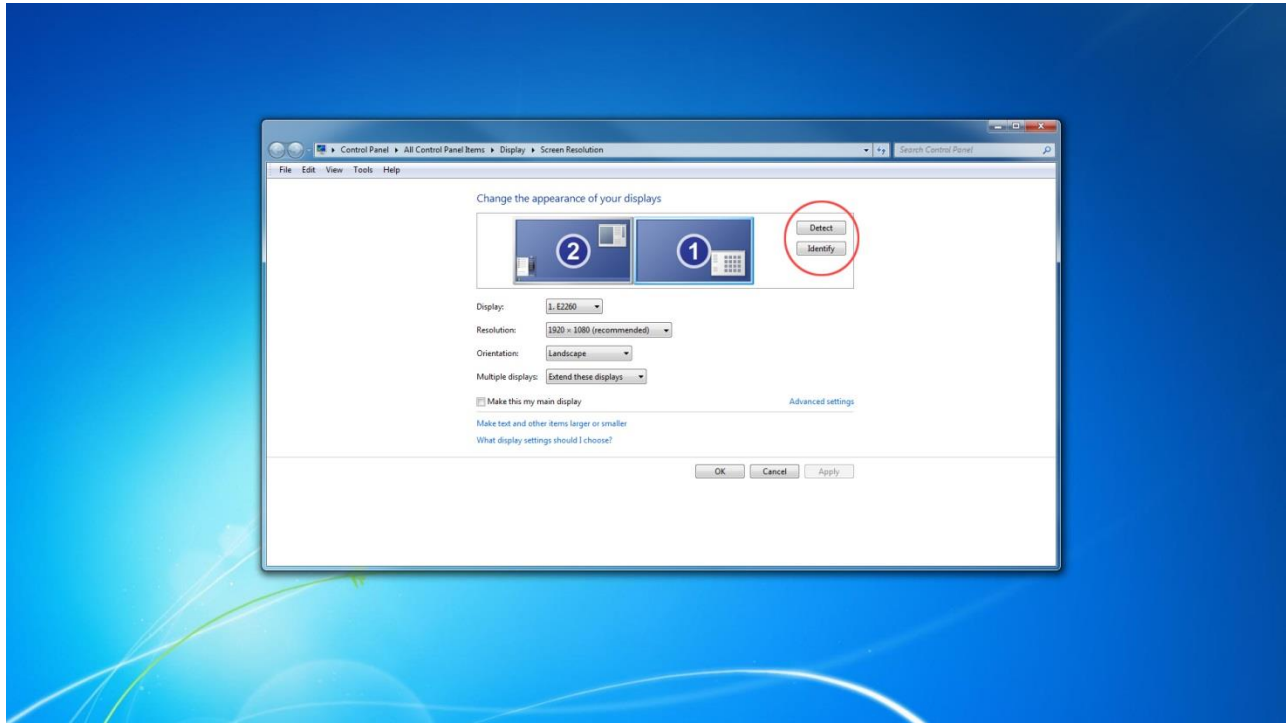
Figure 5 Screen to PC Connections

Connect the screen to the PC via the VGA cable and USB Cable (as shown above). Once these connections have been made and the PC powered ON take the power lead and insert it into the screen and connect to mains outlet. The unit will power ON automatically. Before taking any more steps ensure that the screen is sourcing its display from the PC. This is done by first pressing “MODE” and then scrolling down to the desired input source (PC) and select by pressing “→”.

PC-RGB
HDMI
DMP

IMPORTANT: If the touch screen is the only monitor connected to your PC **NO NOT** take the following step. Only proceed with the following if you are using a laptop or another monitor is connected to your PC.

Access the display options from your Control Panel or right-click on your Desktop and choose “Properties” (then “Settings”) or “Screen resolution”. You should now click “Detect” to allow the PC to discover the touch screen then “Identify” to establish which display is the touch screen.



Select the display that corresponds with the touch screen display then check the box “Make this my main display” or “Use this device as the primary monitor”. This will make the touch screen display your main monitor.

3.3 Internal Media Player

3.3.1 Usage

The screen has a simple built in media player that runs directly from a USB stick. This allows you to display a series of images and videos in a continuous loop.

Begin by loading your image and video files directly onto the root drive (without any folders) of your USB stick in the order that you want them to be displayed. To find out what media formats are supported see section 2.3.2 Supported Media Files. Next, plug the USB stick into the USB port of the screen (see figure 6).



Figure 6 USB Port Location

Your media files will now display in a continuous loop.

3.3.2 Supported Media Formats

Media Type	Supported File Type	
Image	JPEG	Baseline
Video	MPG, AVI, MP4	MPEG-1, MPEG-2, MPEG-4, Xvid, DivX, H264

1. This unit does NOT support WMV or FLV video file types.
2. This unit does NOT support Sony ATRAC3, DTS or Dohly HD audio file types.

Note: Video and image files should be a maximum 1920x1080 resolution (16:9 aspect ratio).

4. F.A.Qs and Troubleshooting Guide

4.1 My Screen is not displaying what is on my PC

4.1.1 Input Source

Your screen may be sourcing its display from another input. First ensure that your screen is connected to your PC (or other video source) via one of the inputs. Next, press “SOURCE” and then navigate to the input source that corresponds with the one you are using and select by pressing “PLAY”.

PC-RGB
HDMI
DMP

4.1.2 Display/monitor button on PC keyboard

If you are sourcing your video signal from a PC your keyboard may have a display/monitor button on it, especially if you are using a laptop. If your touch screen does not display the content of the PC try hitting this button before contacting your supplier.

4.2 My display goes into standby mode

4.2.1 Power saving function

If your screen is powered ON without being connected to a PC via a visual signal (e.g. VGA, HDMI etc.) it will automatically go into standby mode within a few minutes. If your screen is not being supplied with a video signal it will go to standby to ensure that video signal connection is connected properly. Also you must ensure that the touch screen is accessing the correct input. To do this you must press “SOURCE” and then navigate to the input source that corresponds with the one you are using and select by pressing “PLAY”.

PC-RGB
HDMI
DMP

4.3 What are my screen's refresh rates?

If you are running your signal from your PC then some video cards with a pixel clock over 162MHz may not display the image correctly. Normally however your screen will display the image correctly by adjusting the factory preset timing signal automatically.

Resolution	Scanning frequency	
	Horizontal	Vertical
680 x 480	31.5 kHz	60 Hz
800 x 600	37.9 kHz	60 Hz
1024 x 768	48.4 kHz	60 Hz
1280 x 768	48 kHz	60 Hz
1360 x 768	48 kHz	60 Hz
1280 x 1024	64 kHz	60 Hz
1600 x 1200	75 kHz	60 Hz
1920 x 1080	67.5 kHz	60 Hz

IMPORTANT: If you are using with a Macintosh PowerBook, set “Mirroring” to Off on your PowerBook. Refer to your Macintosh's owner's manual for more information about your computer's video output requirements and any special identification or configuration your monitor's image and monitor may require.

4.4 My touch screen's image is unstable, unfocused or swimming

Firstly check that the video signal cable should be firmly connected to the touch screen and the PC. Next, check the touch screen and your display card with respect to compatibility and recommended signal timings.

If your text is blurred, reformat the video mode to “non-interlaced” and use 60Hz refresh rate.

5. Full Touch Screen Range Specifications

Specifications	32"	42"	46"	55"	65"	70"	82"
Part Number	TPZ-TS-32	TPZ-TS-42	TPZ-TS-46	TPZ-TS-55	TPZ-TS-65	TPZ-TS-70	TPZ-TS-82
Unit Size (WxHxD mm)	765.4x455.4x110.9	991x584x111.9	1123.6x667.6x89.9	1292x751x118.8	1564.4x937x129.6	1681.6x1003.6x141.7	1953x1163x174.8
Display Area (mm)	697.67x392.25	930.24x523.26	1016.35x570.54	1209x680	1434x806.6	1553.6x875.6	1805.76x1015.74
Aspect Ratio	16:9						
Resolution	1366x768	1920x1080					
Brightness (cd/m2)	450	500	450	500	700		
Contrast Ratio	5000:1 typ				1500:1 typ	2000:1 typ	
Viewing Angle	178°						
Colour	16.7M						
Response Time (ms)	8						
Colour Temperature	10000k						
Life Time (hours)	50000						
Power Consumption (W)	120	135	240	300	800	1080	
Inputs	VGA, HDMI, DVI, YPbPr, Video IN, RGB/HV, Audio (5mm), USB						
Outputs	Video, Audio						
Touch Resolution (interpolation)	4096x4096						
Operating System	Windows7, Windows2000/XP/2003/Vista/CE						
Power	<2W						
Typical Touch Accuracy (mm)	≥5.2						
Voltage	+4.75VDC-5.25VDC						
Operating Temperature	-20°to 60°						
Storage Temperature	-40°to 70°						
Operating/ Storage Humidity	10% ~ 90%RH						