

## TOPAZ™ Touch Series Hardware User Manual



## Our Full Product Range

Full details of all TOPAZ™ products available can be found by visiting our web site

[www.topazdigital.com](http://www.topazdigital.com)

### HaIO Range



**10" POS**



**23" POS**



**42" HaIO SL**

### SL Series - Wall Mounted



**19", 22", 32", 42", 46", 55"**

### SL Series - Freestanding



**46" & 55"**

### Touch Series - Wall Mounted



**32", 42", 46", 55", 65", 70", 84"**

### Touch Series - Freestanding



**46" & 55"**

## Safety Instructions



- Please keep the display away from any heat sources such as radiators or direct sunlight. Place the display in a stable and well-ventilated place.
- Please handle with care as this product contains glass
- The holes or openings on the display are designed for ventilation. Do not cover or block the ventilation holes or openings with any objects.
- Remove protective covering from the screen before you use the display.
- Shut off the power supply before cleaning. Use a soft lint-free cloth instead of a tissue to wipe the screen.
- You may use a glass cleaner to clean the product as required. However, never spray the cleaner directly onto the display surface.
- Do not attempt to repair this product yourself. Any modification to the product or repair carried out that is not done with our authorization may invalidate the warranty and could be potentially dangerous.

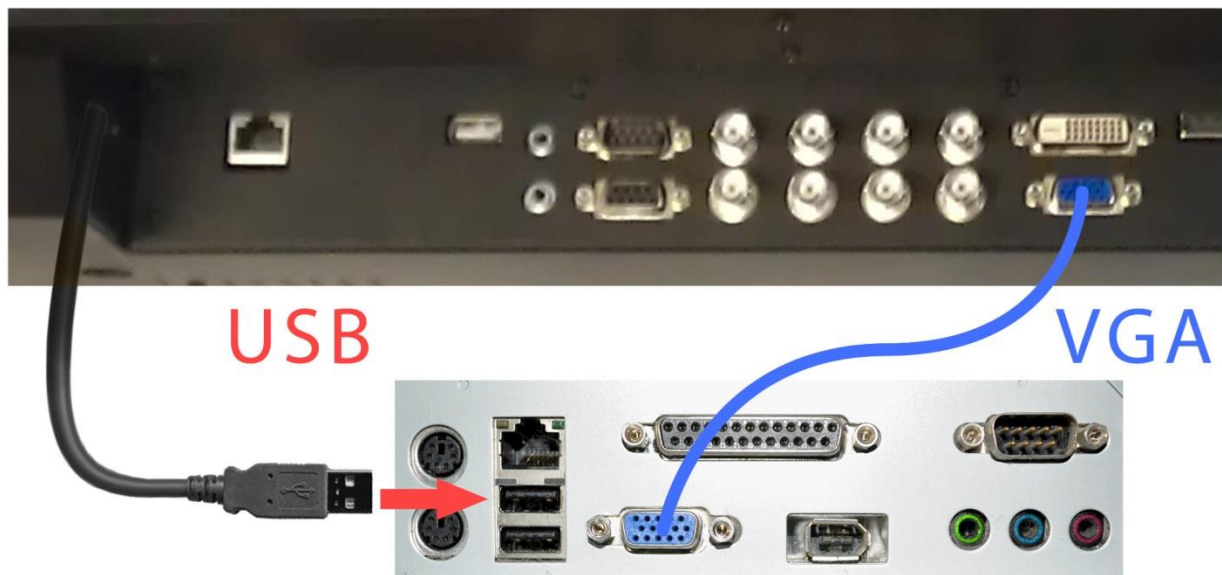
If you have a problem that cannot be solved using the "Troubleshooting" guidelines, please contact your supplier or visit the Technical Support section on our web site [www.topazdigital.com](http://www.topazdigital.com) .

## Quick Start Guide (Windows 7)

This section of the guide allows quick setup and use of the unit. Please refer to the main part of the User Guide for full information on use of the unit.

Please follow the steps detailed below:

1. Connect your PC to the mains via the power outputs located inside the unit (using either C6 or C14 connectors) and ensure that there is a mouse connected to it.
2. Plug in the unit's power supply to the mains outlet – this should power on both PC and screen.
3. Connect the screen to the PC via the VGA Cable and link the screen's Infrared touch sensors to the PC via the USB cable (as shown below).



**Figure 1 Screen to PC Connections**

4. Access the display options from your Control Panel or right-click on your Desktop and choose "Screen resolution".
5. Select the "Orientation" dropdown menu then click on "Portrait (flipped)".
6. Click "OK" and your screen contents and operations will now be rotated 90° clockwise.
7. You may be asked "Do you want to keep these display settings?" click on "Keep changes".
8. The screen should now be acting as a monitor and allowing you to use your finger as a mouse on the screen displaying the PC's contents.

## Contents:

1.	Introduction.....	6
1.1	Box Contents.....	6
1.2	Product Overview .....	6
1.3	Remote Control.....	7
1.4	Replacing the Remote Control Battery .....	8
1.5	Menu Operation.....	9
1.6	Inputs .....	11
2.	Set Up.....	12
2.1	Connecting to PC .....	12
2.2	Changing your display to portrait mode.....	14
2.2.1	(Windows 7) .....	15
3.	F.A.Qs and Troubleshooting Guide.....	16
3.1	My Touch Screen is not displaying what is on my PC.....	16
3.1.1	Input Source .....	16
3.1.2	Display/monitor button on keyboard .....	16
3.2	My display turns itself OFF when it's not connected to my PC .....	17
3.2.1	Power saving function .....	17
3.3	My screen is displaying video signal but touch function is disabled .....	17
3.4	My Touch Service software is displaying the message “Have not linked equipment” even though I have.....	18
4.	Full Range Specifications .....	20

## Table of Figures

Figure 1 Screen to PC Connections .....	3
Figure 2 Screen to PC Connections .....	4
Figure 3 Product Overview .....	7
Figure 4 Screen Inputs .....	11
Figure 5 Screen to PC Connections .....	12

## I. Introduction

Congratulations on your purchase of your TOPAZ™ Freestanding Touch Display. Please read carefully and follow all instructions in the manual before first use.

The product should not be exposed to liquids dripping or splashing and no liquid filled objects, such as vases, should be placed on the product.

For user convenience, a number of operations can be performed through the remote control.

**Attention:**

1. Do not change any default settings unnecessarily
2. Keep the product far away from water during installation and use.

### I.1 Box Contents

1x TOPAZ Touch Series Freestanding Display

1x VGA Cable

1x USB Cable

1x CD (User Manual)

1x Remote Control

### I.2 Product Overview

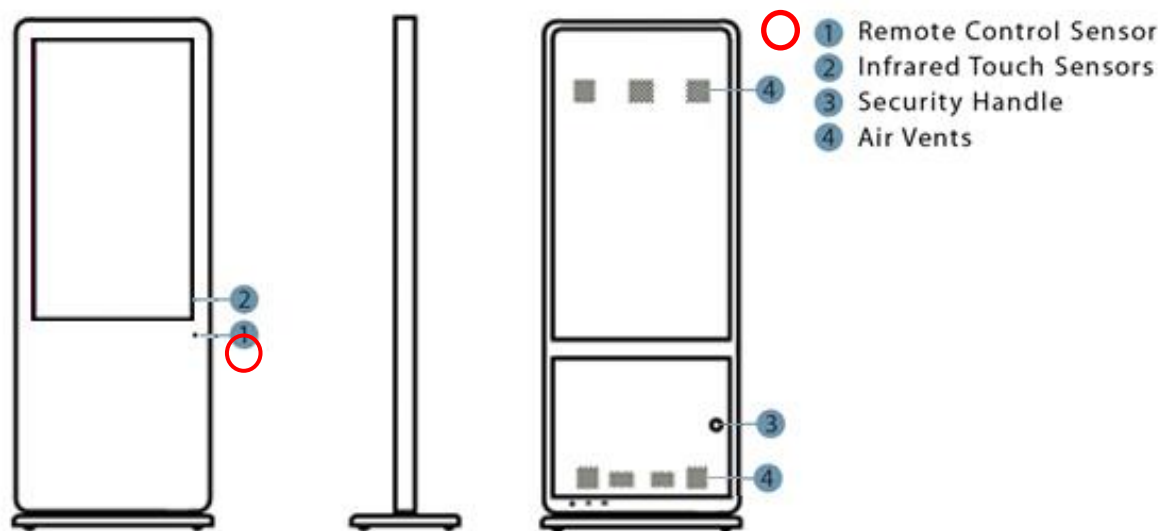


Figure 2 Product Overview

### I.3 Remote Control

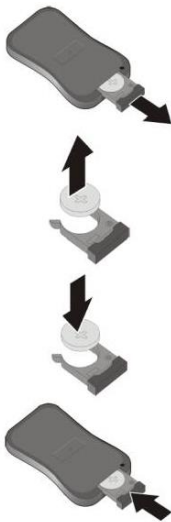


Button	Function
Power	Power ON or OFF
Mute	Disable audio
0-9	Numbers for time input
-/--	Input multiple numbers
MODE	Signal input select
←	Left navigation button
↑	Up navigation button
→	Right navigation button
↓	Down navigation button
OK	Confirm selection
MENU	Open/close menu settings



## **I.4 Replacing the Remote Control Battery**

1. Open the battery cover
2. Take out the battery box in the right direction as shown in the picture below
3. Remove the used battery
4. Insert the new battery with its terminals corresponding to the indicator
5. Put the cover back in



## 1.5 Menu Operation

The Menu includes the following sub-menus: Picture, Sound, System, Function and Geometry.

*When using the Remote Control please ensure that it is no more than 20cm away from the sensor. This close proximity control feature is to ensure that you only control the desired device if there are others in its vicinity.*

Press **“MENU”** to enter Main Menu, press ←→ to select the right sub-menu and ↑↓ to select the desired item, press **“OK”** to confirm selection. Press → where instructed to confirm section. Press “menu” at any time to go back or exit.

PICTURE	SOUND	SYSTEM	FUNCTION	GEOMETRY
---------	-------	--------	----------	----------

### Picture

As with all settings these can be adjusted and changed back to default at any time.

CONTRAST	50	
BRIGHTNESS	50	
COLOR TEMP	<NORMAL>	or WARM/COOL/USER DEFINED
SCALE		
AUTO		
PICTURE MODE	<STANDARD>	or DYNAMIC/SOFT/USER DEFINED

### Sound

EQUALIZER	120 500 1.5K 5K 10K	50 50 50 50 50
BALANCE	0	(LEFT/RIGHT SOUND DISTRIBUTION)
SOUND MODE	<USER>	or STANDARD/MOVIE/MUSIC
SURROUND	<OFF>	or ON

## System

Here you can change all of the On Screen Display (OSD) settings such as menu brightness and how long it displays for. This sub-menu also includes the fan settings so you can set what temperature the internal fan activates.

OSD LANGUAGE	<ENGLISH>	or 中文
OSD H-POSITION	50	(HORIZONTAL POSITION OF THE MENU)
OSD V-POSITION	50	(VERTICAL POSITION OF THE MENU)
OSD DURATION	15	(NUMBER OF SECONDS MENU WILL DISPLAY FOR)
OSD HALFTONE	50	(BRIGHTNESS OF THE MENU)
TEMPERATURE	XX	(INTERNAL TEMPERATURE)
FAN ACTIVE	30	(TEMPERATURE AT WHICH FANS BECOME ACTIVE)
RESET	>	(RESETS ALL SETTINGS BACK TO DEFAULT)

## Function

TIMER	CURRENT TIME – XX.XX TURN OFF TIME – 00.00 TURN ON TIME – 00.00	<OFF> or ONCE/EVERYDAY
CURRENT X	I	(VIDEO WALL FUNCTION)
CURRENT Y	I	
TOTAL X	I	
TOTAL Y	I	
LEFT EDGE	0	
UP EDGE	0	
RIGHT EDGE	0	
DOWN EDGE	0	

### Geometry

H-POSTION
V-POSTION
CLOCK
PHASE

### Switching between inputs

In order to change input sources, please select **“MODE”** on the remote control and then scrolling down to the desired input source and select by pressing “→”.

<b>PC (VGA)</b>
HDMI
DVI
AV1
AV2
YPBPR



## 1.6 Inputs

VGA – Video Graphics Array Signal Input (RECOMMENDED)

HDMI – High Definition Multimedia Interface Signal Input

DVI – Digital Video Interface

YPbPr – Component Signal Input

Video In (AV) – Composite Signal Input (X2)

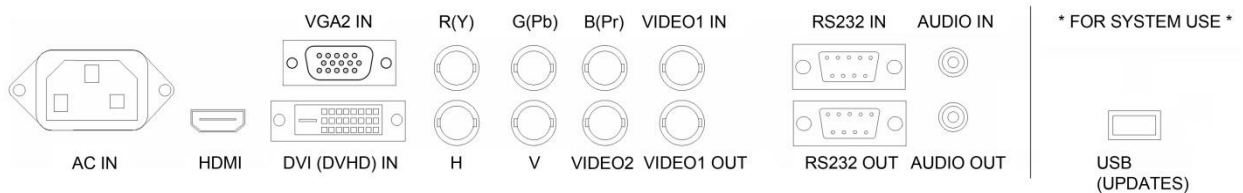
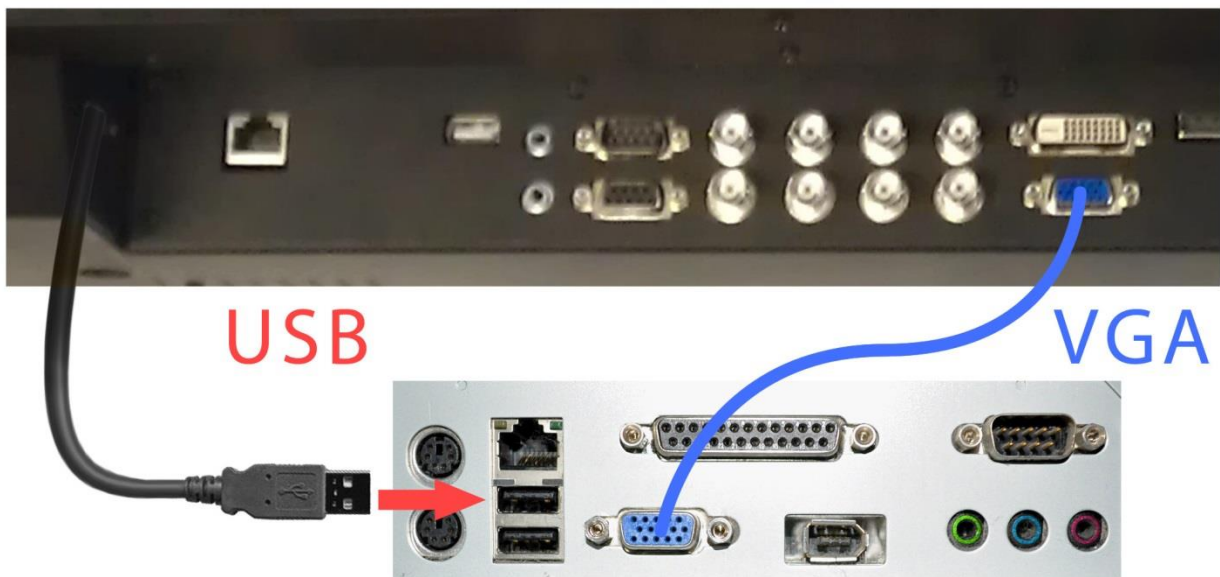


Figure 3 Screen Inputs

## 2. Set Up

### 2.1 Connecting to PC

There is space inside the unit for a small form factor PC. As well as being internally powered, the PC must be connected to the touch screen in two ways: visually and interactively. The recommended visual connection is via the VGA Cable (included) meaning that the display acts like a monitor for the PC. The touch function is achieved by linking the Infrared touch sensors around the screen to the PC via the USB Cable inside (**DO NOT connect this yet unless you are using a PC with Windows 7 Operating System**).



**Figure 4 Screen to PC Connections**

**IMPORTANT:** Be sure to connect the PC to the **USB** port on the side of the input panel and **NOT** the one adjacent to the other inputs.

Computer	Touch screen	Description
VGA Output	VGA input	Computer drives the video display on the monitor
Touch Input (USB)	Touch Output (USB)	Feedback from the touch monitor to the PC on where has been touched on the screen

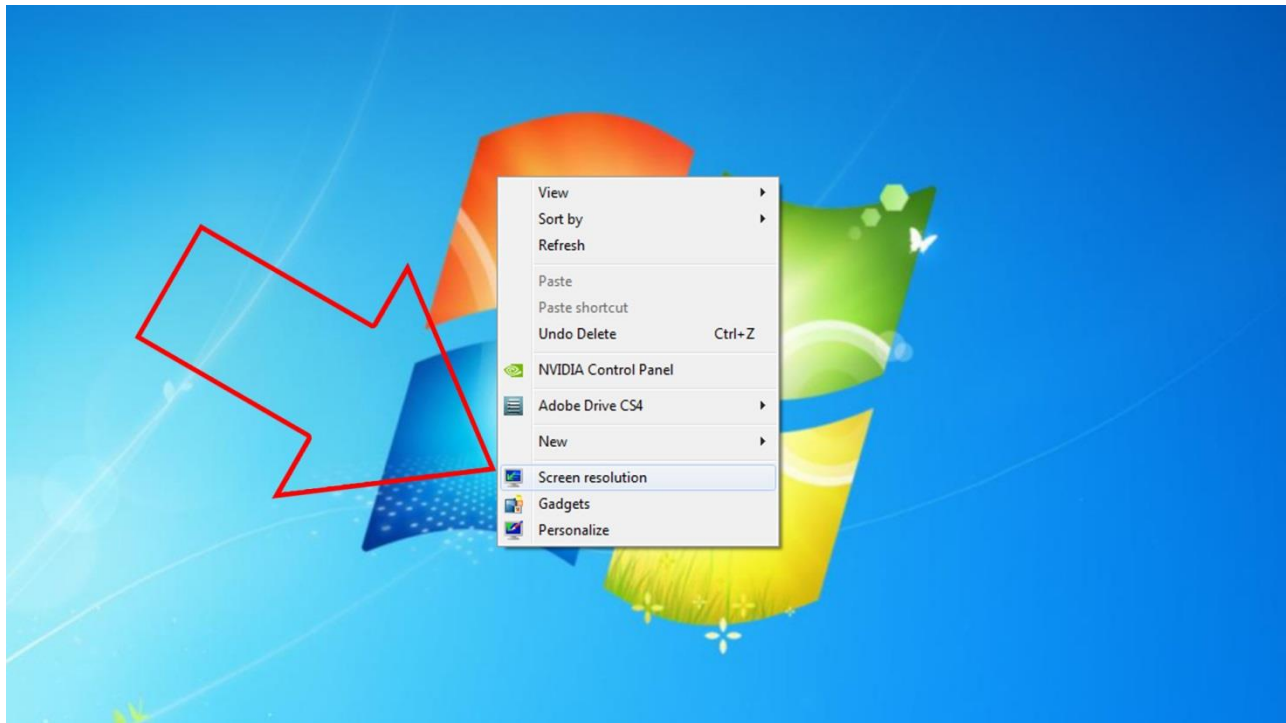
Begin by connecting your PC to the mains via the power outputs located inside the unit (using either C6 or C14 connectors) and ensure that there is a mouse connected to it. Next, Plug in the unit's power supply to the mains outlet – this should power on both PC and screen. Connect the screen to the PC via the VGA cable **ONLY** (as shown above). Before taking any more steps ensure that the screen is sourcing its display from the PC. This is done by first pressing **“MODE”** and then scrolling down to the desired input source (PC) and select by pressing **“→”**.

<b>PC (VGA)</b>
HDMI
DVI
AV1
AV2
YPBPR

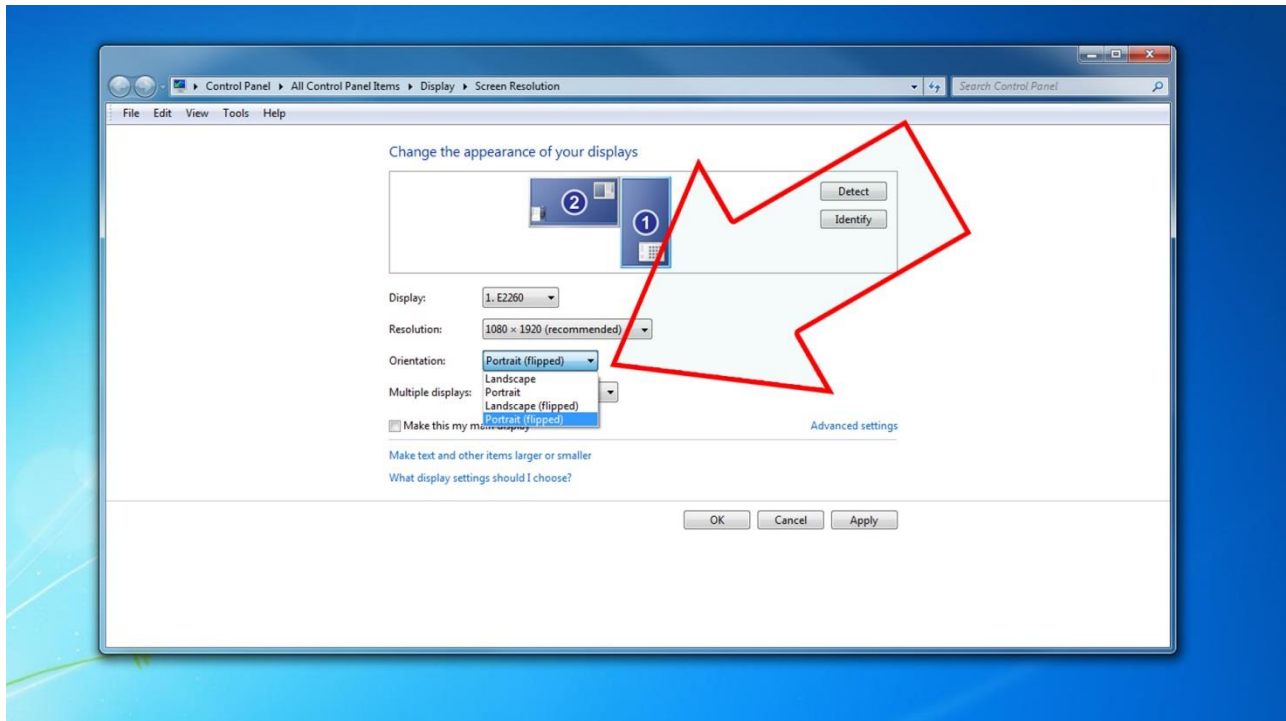
## 2.2 Changing your display to portrait mode

### 2.2.1 (Windows 7)

First ensure that you have connected to touch screen to the PC via the VGA cable. Still using your mouse access the display options from your Control Panel or right-click on your Desktop and choose “Screen resolution”.

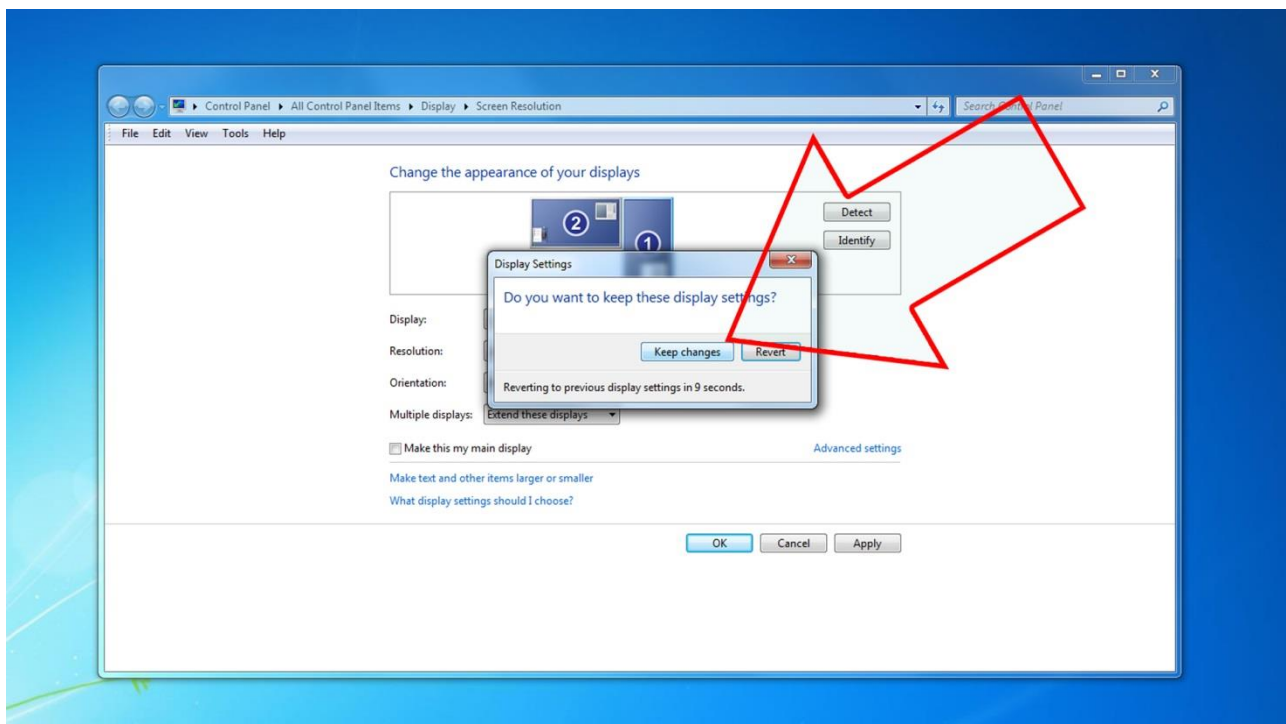


Select the “**Orientation**” dropdown menu then click on “**Portrait (flipped)**”.



Click **“OK”** and your screen contents and operations will now be rotated 90° clockwise.

You may be asked **“Do you want to keep these display settings?”** click on **“Keep changes”**.





## 3. F.A.Qs and Troubleshooting Guide

### 3.1 My Touch Screen is not displaying what is on my PC

#### 3.1.1 Input Source

Your Touch Screen may be sourcing its display from another input. First connect the Serial Control Box to the screen via the CAT5 port (marked REMOTE KEY BOARD on “Inputs” diagram Figure 2). When using the Remote Control please ensure that it is no more than 20cm away from the sensor on the Serial Control Box. This close proximity control feature is to ensure that you only control the desired device if there are others in the area. Press “MODE” and then scroll down to the desired input source and select by pressing “→”.

<b>PC (VGA)</b>
HDMI
DVI
AV1
AV2
YPBPR

#### 3.1.2 Display/monitor button on keyboard

Your keyboard may have a display/monitor button on it, especially if you are using a laptop. If your Touch Screen does not display the content of the PC try hitting this button before contacting your supplier.

## **3.2 My display turns itself OFF when it's not connected to my PC**

### **3.2.1 Power saving function**

If your Touch Screen display is powered ON without being connected to a PC via a visual signal (e.g. VGA, DVI etc.) it will automatically power OFF within a few minutes. If your Touch Screen display is not being supplied with a video signal it will power OFF so ensure that video signal connection is connected properly. Also you must ensure that the Touch Screen is accessing the correct input. To do this you must first connect the Serial Control Box to the screen via the CAT5 port (marked REMOTE KEY BOARD on "Inputs" diagram Figure 2). When using the Remote Control please ensure that it is no more than 20cm away from the sensor on the Serial Control Box. This close proximity control feature is to ensure that you only control the desired device if there are others in the area. Press "MODE" and then scroll down to the desired input source and select by pressing "→".

<b>PC (VGA)</b>
HDMI
DVI
AV1
AV2
YPBPR

## **3.3 My screen is displaying video signal but touch function is disabled**

Please ensure the Touch Screen is connected to the PC via the USB Cable. Go through the steps in Section 2.1 to do this correctly.

### 3.4 My Touch Service software is displaying the message “Have not linked equipment” even though I have.

If you are using a Windows XP PC and you have installed the driver software it should be able to detect the new hardware once you have connected it via the USB cable. If installation is complete and connections have been made you should NOT see the following:



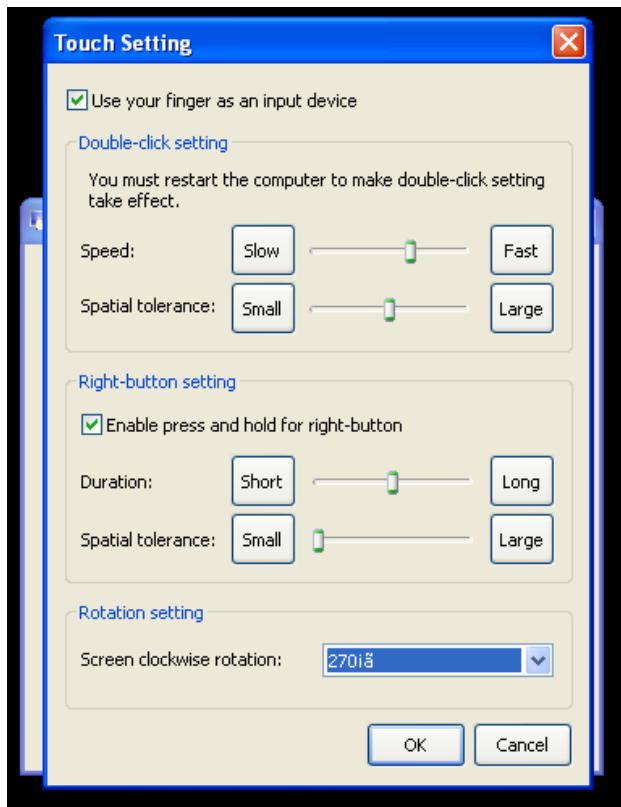
If, however, you see this message you should begin by disconnecting the USB cable and restarting the PC. Once your PC has powered back up launch the Touch Service software and reconnect it to your touch screen via the USB cable, then you should see this message:



Give this a few seconds and once the PC has detected the touch screen you will see this message:



Your PC and touch screen should now be linked interactively. Finally, still using your mouse, click the **“Settings”** button then under the **“Rotation setting”** dropdown menu select **“270”** and click **“OK”**.



This should calibrate your screen. Your screen should now be a fully functioning touch screen display.

## 4. Full Touch Screen Range Specifications

Specifications	46"	55"
Part Number	TPZ-TS-46FS	TPZ-TS-55FS
Unit Size (WxHxD mm)	717x1787x80	827x1947x80
Display Area (mm)	578.7x1024.1	686.4 x 1215.6
Aspect Ratio	9:16	
Resolution	1920x1080	
Brightness (cd/m2)	500	
Contrast Ratio	4000:1 typ	5000:1 typ
Viewing Angle	178°	
Colour	16.7M	
Response Time (ms)	8	
Colour Temperature	10000k	
Life Time (hours)	50000	
Power Consumption (W)	370	450
Inputs	VGA, HDMI, Audio (5mm), USB	
Outputs	Video, Audio	
Touch Resolution (interpolation)	4096x4096	
Operating System	Windows7, Windows2000/XP/2003/Vista	
Response Time (ms)	≤16	
Power	<2W	
Ports (inputs)	USB	
Typical Touch Accuracy (mm)	≥5.2	
Voltage	+4.75VDC-5.25VDC	
Operating Temperature	-20°to 60°	
Storage Temperature	-40°to 70°	
Operating/Storage Humidity	10% ~ 90%RH	